



ROMOLD

CONTENT ROAD GULLIES

ROAD GULLIES FROM ROMOLD	80
PROJECT PICTURES – YOUR IDEAS IMPLEMENTED	82
PRODUCT VARIETY AND COMPETENCE	84
ROMOLD MOTORWAY DRAINAGE	86
ROAD GULLIES FOR DRY SLUDGE	
PP ROAD GULLY, GRATING 500 x 500, BUCKET LOW VERSION	88
PP ROAD GULLY, GRATING 300 x 500, BUCKET LOW VERSION	89
PE ROAD GULLY, GRATING 500 x 500, BUCKET LOW VERSION	90
PE ROAD GULLY, GRATING 300 x 500, BUCKET HIGH VERSION	91
PE ROAD GULLY, GRATING 500 x 500, BUCKET HIGH VERSION	92
PE ROAD GULLY, GRATING 300 x 500, BUCKET HIGH VERSION	93
ROAD GULLIES FOR WET SAND	
PE ROAD GULLY, GRATING 500 X 500, SAND TRAP APP. 76L	94
PE ROAD GULLY, GRATING 300 X 500, SAND TRAP APP. 76L	94
PE ROAD GULLY, GRATING 500 X 500, SAND TRAP APP. 87L, EXIT 45°	95
PE ROAD GULLY, GRATING 300 X 500, SAND TRAP APP. 87L, EXIT 45°	95
ROAD GULLIES FOR LONGITUDINAL DRAINAGE	
PE ROAD GULLY, GRATING 500 X 500, WITH ONE INLET, TYP 1B	96
PE ROAD GULLY, GRATING 300 X 500, WITH ONE INLET, TYP 1B	96
PE ROAD GULLY, GRATING 500 X 500, WITH 3 INLETS, TYP 3B/3BL	97
PE ROAD GULLY, GRATING 300 X 500, WITH 3 INLETS, TYP 3B/3BL	97
PE ROAD GULLY, GRATING 500 X 500, WITH 3 INLETS, TYP 3BL	98
PE ROAD GULLY, GRATING 300 X 500, WITH 3 INLETS, TYP 3BL	98
ROAD GULLIES WITH STENCH TRAP	99
SPECIAL SOLUTIONS	100
PRICES AND DETAILS	102
ACCESSORIES	105
ASSEMBLY AND INSTALLATION NOTES	106



ROMOLD: EASY TO RELY ON

INNOVATIONS COMBINED WITH CERTIFICATED QUALITY

WHEN IT COMES TO CHAMBERS: ROMOLD!



ROMOLD has been the European pioneer for industrial manufactured plastic chambers for over 20 years. Many innovations, which are today state of the art, have been developed by the engineers and employees of ROMOLD.

When it comes to chambers, go with ROMOLD.

- 1992:** first industrial DN 1000 manholes in Europe
- 1992:** indirect load transfer of traffic loads in road construction
- 1994:** first energy compensating chambers with self-cleaning round bottom
- 1995:** launch of the DN 800 chamber system in accordance with EN 476 in Europe
- 1996:** first watertight cable chamber system
- 1996:** road gullies made of plastics
- 1998:** corrosion-free pressure pipe end chambers based on the round bottom system
- 2000:** fully equipped valve chambers made of plastics
- 2002:** rain and wastewater combined in a single chamber
- 2005:** patented active-carbon-filter for elimination of odours from sewage systems
- 2008:** divisible square-section plastic cable chamber (ROM-Box))

- 2009:** road gullies with sludge sump also for longitudinal drainage
- 2010:** DN 1000 chamber system in accordance with EN 13598-2
- 2012:** road gullies with stench traps
- 2013:** RPC 80 domestic pump station for class D 400
- 2014:** Slug feeder, broadband chamber
- 2016:** Longitudinal drainage for motorway construction
- 2017:** 2nd generation sewer chamber filter
- 2018:** Cover-in-cover system absolutely watertight solution for valve chambers



„General approvals by the building authorities are provided for such building products and constructions within the scope of the country building code, for which there are no generally acknowledged rules of technology, especially DIN standards or which vary essentially from those.“ Source: <https://www.dibt.de/de/Zulassungen/abZ-Zulassungsbereiche.html>

Standard DIN EN 13598-2:2016 „Plastics piping systems for non-pressure underground drainage and sewerage – Unplasticized poly(vinyl chloride) (PVC-U), polypropylene (PP) and polyethylene (PE) – Part 2: Specifications for manholes and inspection chambers for traffic surfaces and deep installation“ has applied for several years.

ROMOLD waste water chambers comply with the valid EN 13598-2.

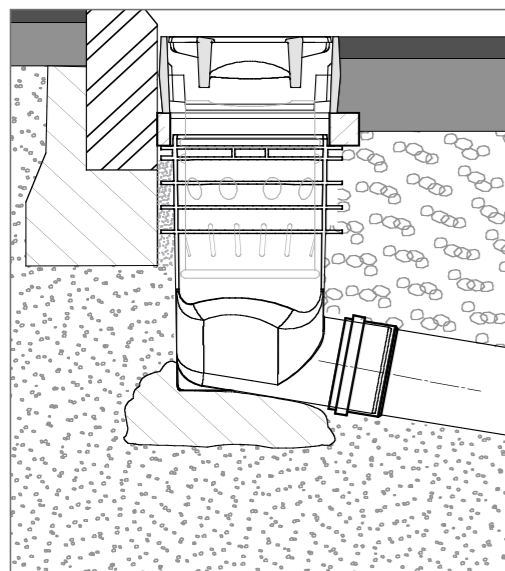
Conformity must be proven for standardised products subject to an existing standard. Standardised products cannot be assigned to a general construction permit (any longer).

ROMOLD ROAD GULLIES – AN OVERVIEW

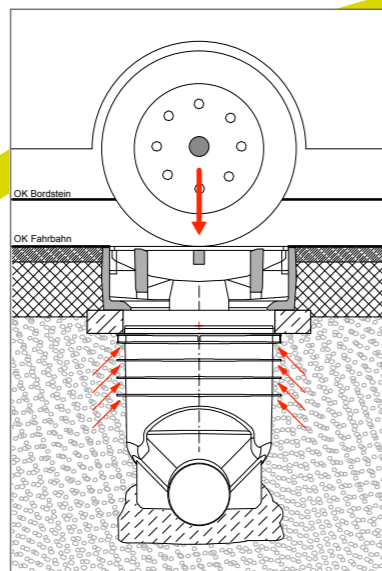
TECHNICAL ADVANTAGES

Special solutions at page 100/101!

only with the original:
no cast-in-place concrete in the rib area



to class D:
integrated load transfer,
no settlement of a building component

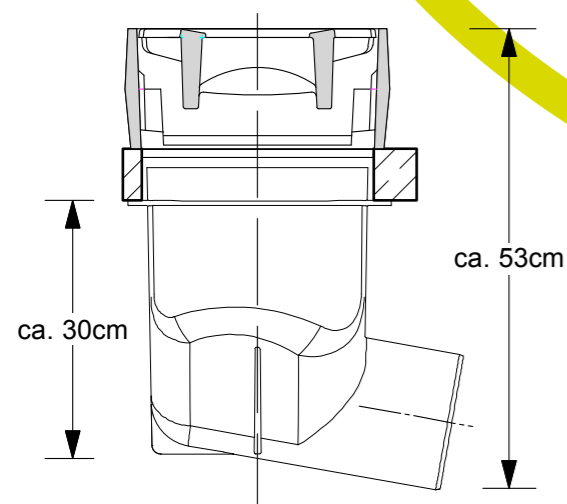


- single piece unit
- integrated outlet spigot
- chemical resistant
- de-icing salt resistant
- for socket-ended pipe systems
- for welded pipe system
- settlement-free

all ROMOLD road gullies can be drilled



all ROMOLD road gullies with height adjustment



- easy to lift
- easy handling
- no lifting tool
- quick build-in

- commercial load distribution rings
- commercial inlet rate
- swaging cover possible



PHOTOS OF PROJECTS

YOUR IDEAS FIELD-TESTED



ROMOLD ROAD GULLIES

SOLUTIONS FOR ALL APPLICATION AREAS



ROAD GULLY:
STANDARD



ROAD GULLY:
LONGITUDINAL DRAINAGE



ROAD GULLY:
WET SLUDGE TRAP



ROAD GULLY:
STENCH TRAP



Details see page 105

CLEVER:
For the build-in in the conical channel or the pendulum channel can be used the 12 % angular load distribution rings.



Details see page 105

Extension for all gullies Typ GRT/GST

GRT E 40/55
Height 55 cm
Shorting dimension 45 cm
incl. seal



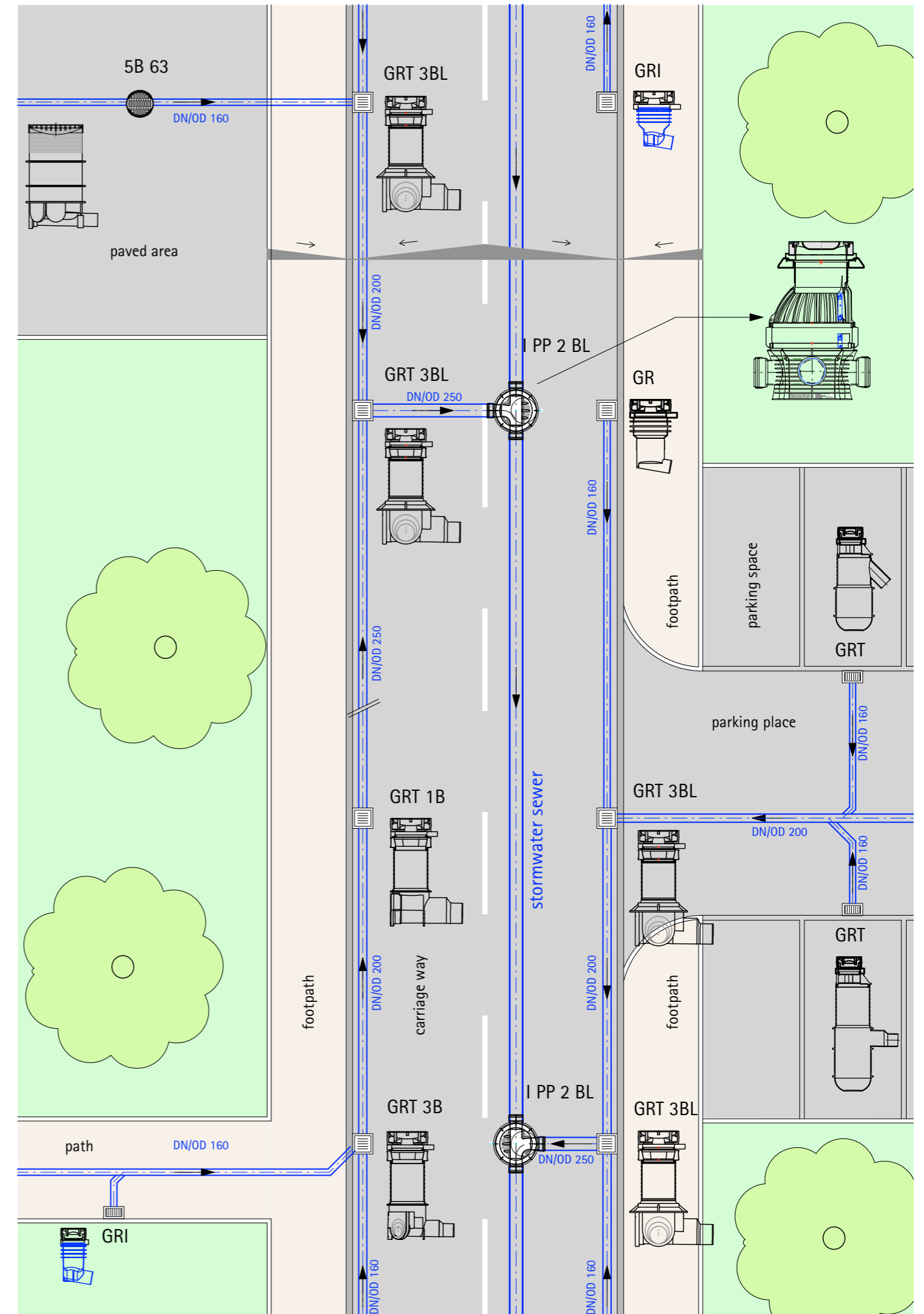
Details see page 105

Suitable for all ROMOLD road gullies. load absorbing load distribution rings from plastic, unbreakable and directly attachable, no keim mortar bed necessary.

Load distribution ring from plastic

Bearing rin in v-shaped version

More than 150.000 units built-in



Special solutions see page 100/101

ROMOLD MOTORWAY DRAINAGE

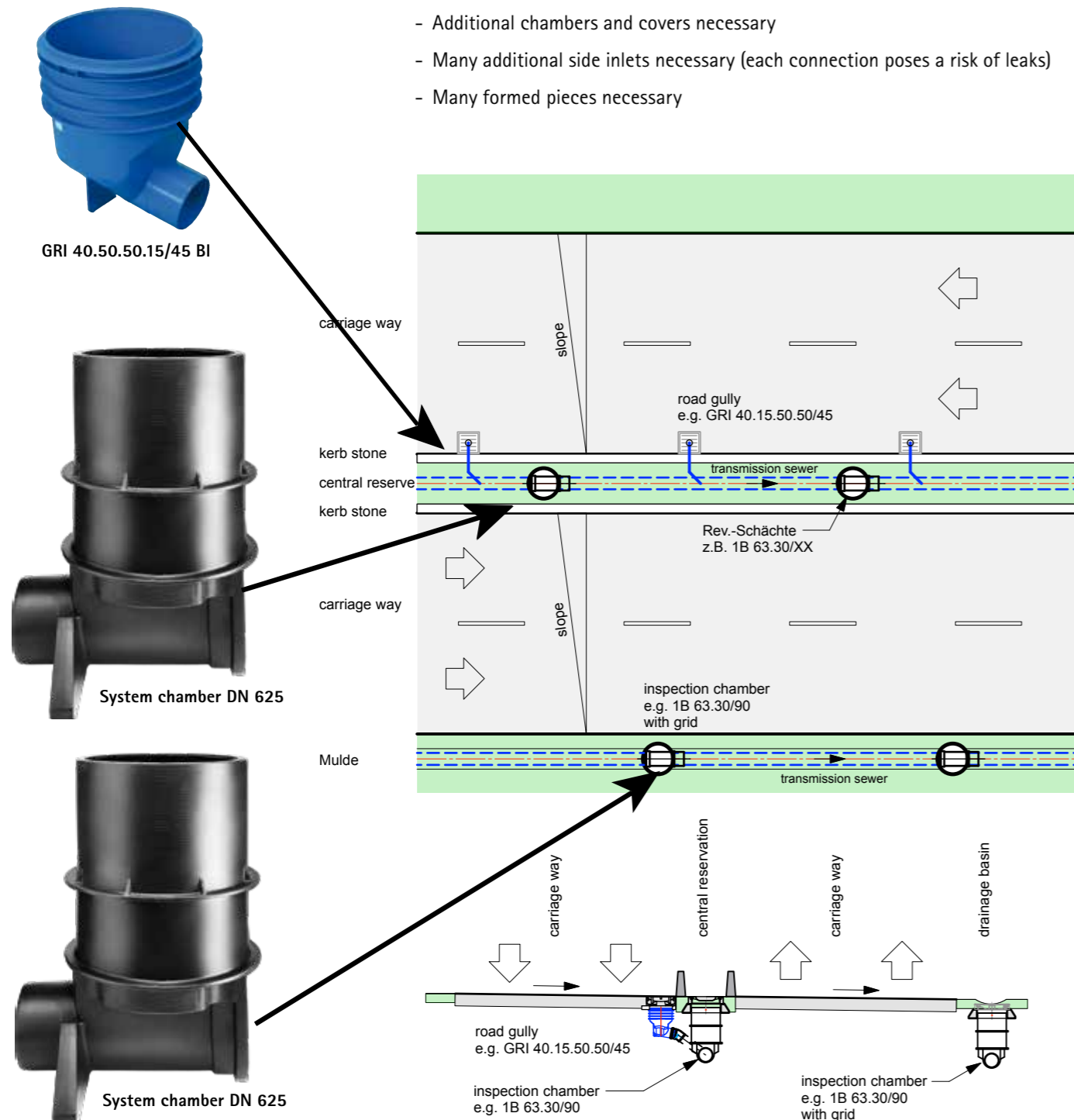
EVERYTHING FROM A SINGLE SOURCE

VARIANT 1 (TRADITIONAL)

COLLECTOR PIPE IN THE CENTRAL RESERVATION

Road gullies with connection to transport pipe with chamber

- Additional chambers and covers necessary
- Many additional side inlets necessary (each connection poses a risk of leaks)
- Many formed pieces necessary

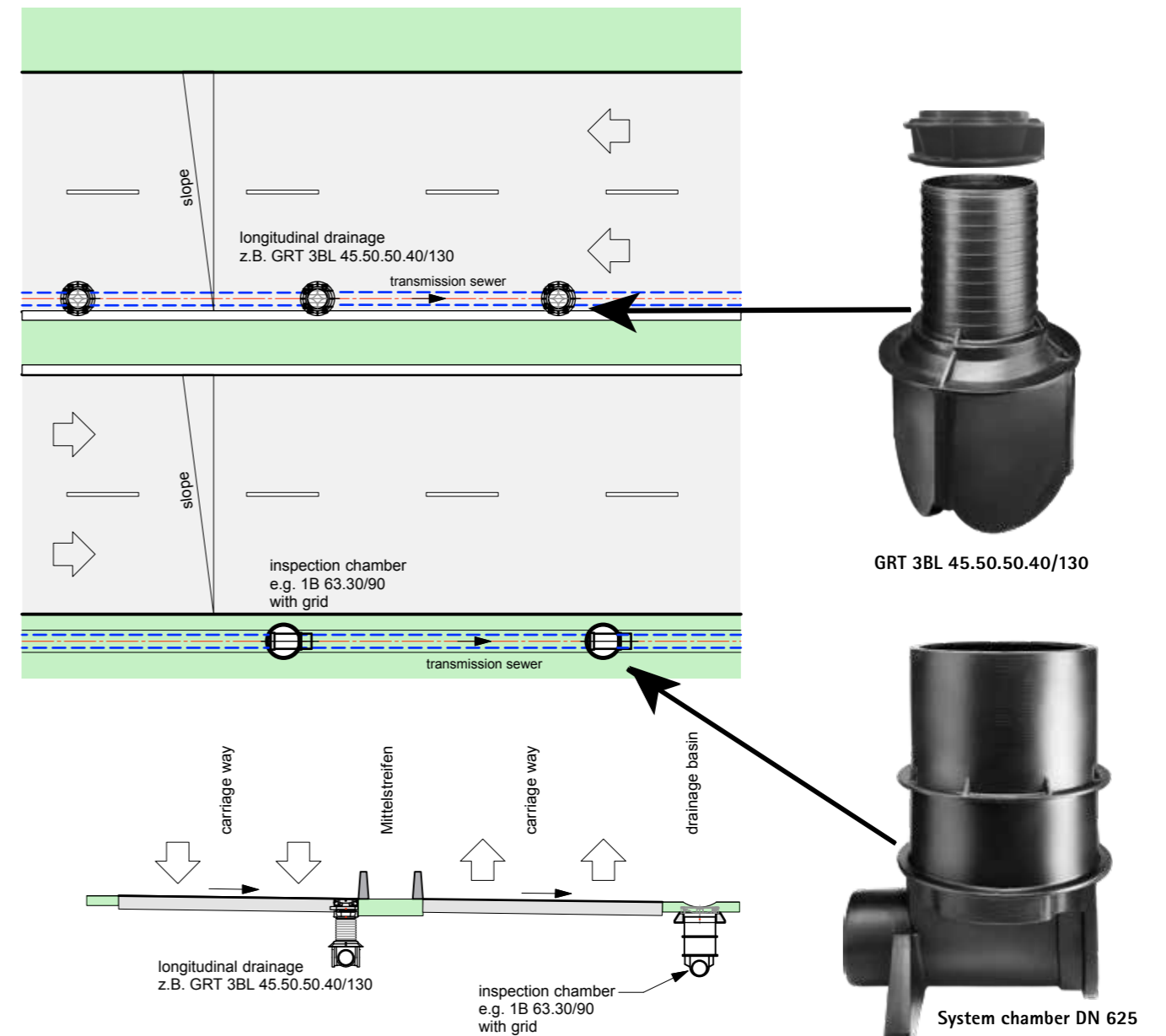


VARIANT 2 (ECONOMICAL)

COLLECTOR PIPE BELOW THE ROAD GULLIES

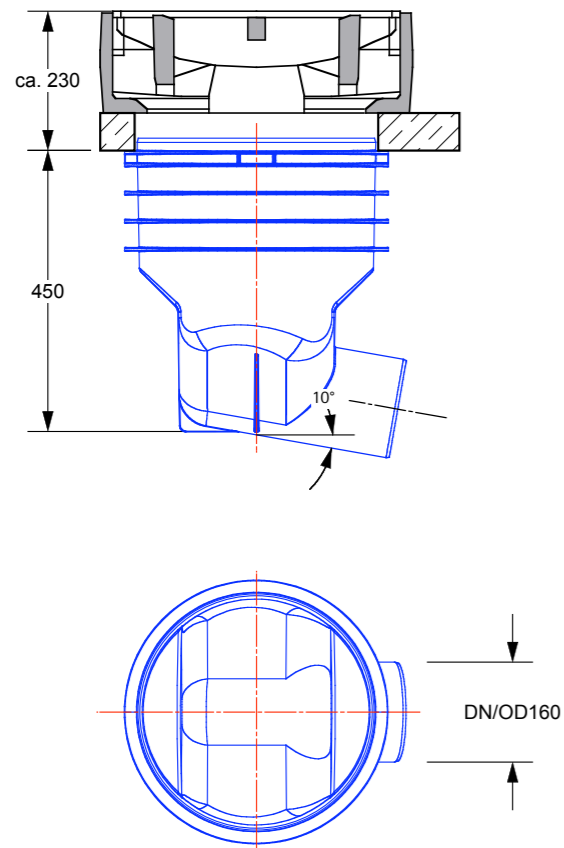
Road gullies with combined inlet and transport function. Transport channel directly under the inlet gratings:

- + fewer chambers necessary
- + no side inlets necessary for transport pipe



PP ROAD GULLY TYP GRI

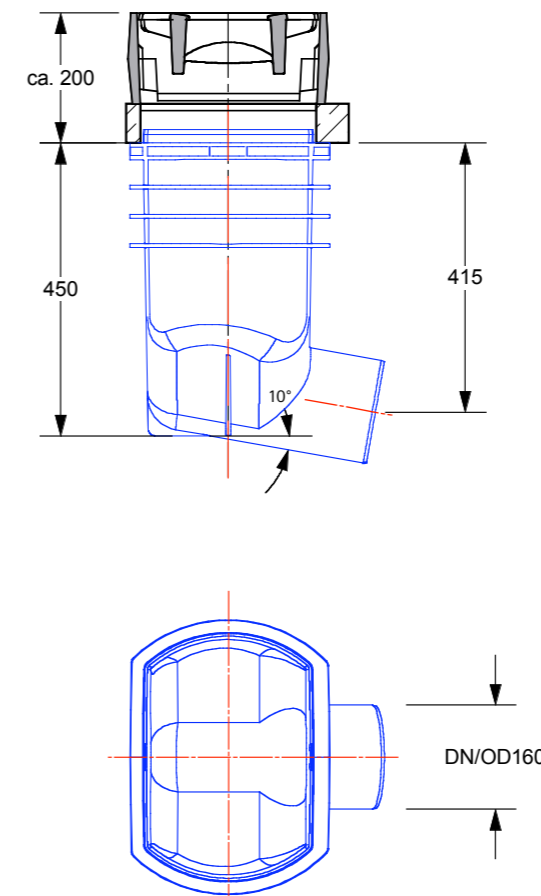
FOR DRY SLUDGE TOP UNIT 500 X 500,
BUCKET LOW VERSION FORM B1



For latest information on this topic, visit www.romold.de, menu products, submenu drainage systems/road gullies

PP ROAD GULLY TYP GRI

FOR DRY SLUDGE TOP UNIT 300 X 500,
BUCKET LOW VERSION FORM D1



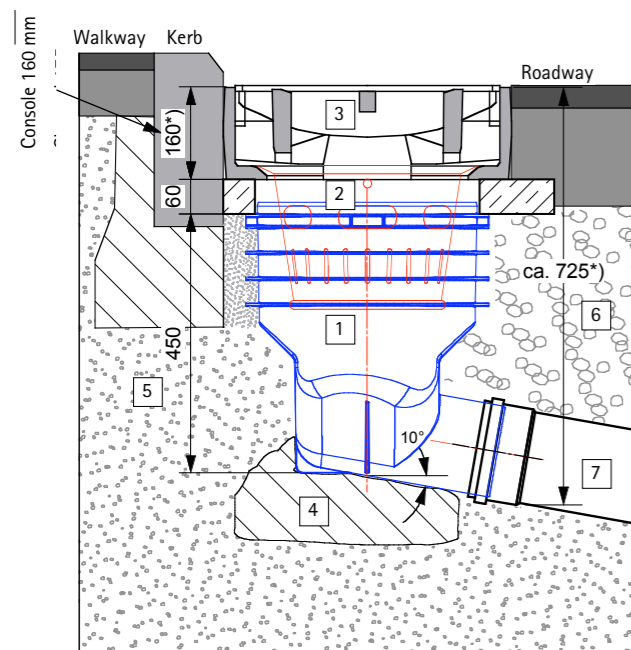
PUBLIC TENDER TEXT EXAMPLE

ROMOLD PP road gully DN 400, for Aufsätze 300 x 500 mm, H= ca. 45 cm

Typ: GRI 40.50.30.15/45 BI

ROMOLD PP road gully DN 400, for grating 500x300 mm class C 250 or D 400 in accordance with DIN EN 124/DIN 1229, material PP, road gully made of 100 % virgin material with no recycled parts or foaming agents. Outlet connection DN /OD 160 mm, inclination 10°, connection for PVC-KG pipes for DIN-compliance EN 1401 and PP pipes for DIN EN 1852 compliance, with integrated shift protection, suitable for concrete supporting ring 10b for DIN 4052-3 compliance, suitable for attachment of dirt bucket form D1 for 4052-4DIN-compliance, with horizontal reinforcement ribs for interlocking connection with the street structure (load transmission). Color: blue, Installation height: app. 45 cm (total height with grating: app. 65 cm), installation according to ROMOLD installation instructions.

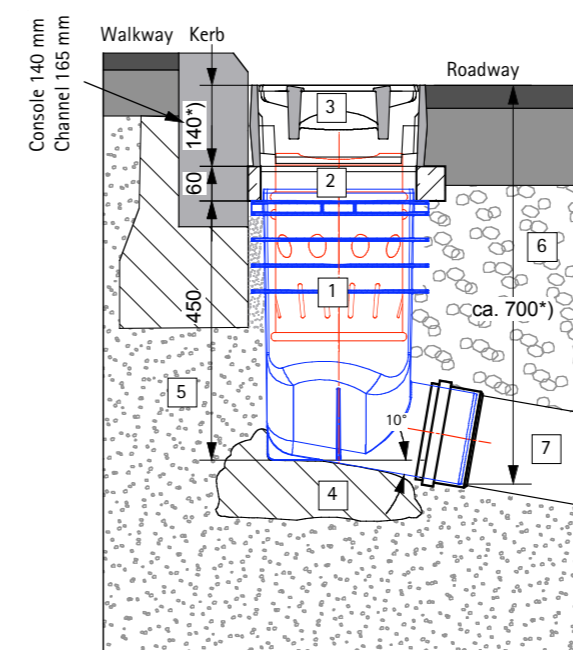
System ROMOLD or equal



- KEY**
- 1 ROMOLD PP road gully
 - 2 Load distribution ring plastic/concrete page 105
 - 3 Grating 500 x 500, Class D acc. DIN 19594
 - 4 Lean concrete bearing, h = mind. 10 cm
 - 5 Compressible backfill material
 - 6 Frost protection layer road bed
 - 7 Connecting pipe line DN/OD 160



GRI 40.50.50.15/45 BI



- KEY**
- 1 ROMOLD PP road gully
 - 2 Load distribution ring plastic/concrete page 105
 - 3 Grating 300 x 500, class D acc. DIN 19594
 - 4 Lean concrete bearing, h = mind. 10 cm
 - 5 Compressible backfill material
 - 6 Frost protection layer road bed
 - 7 Connecting pipe line DN/OD 160



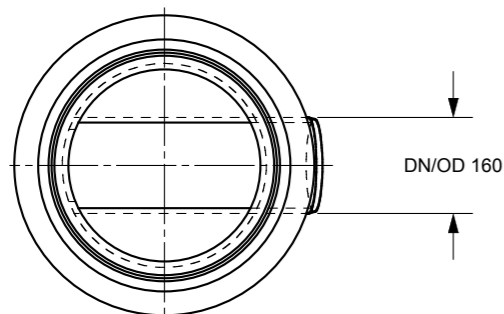
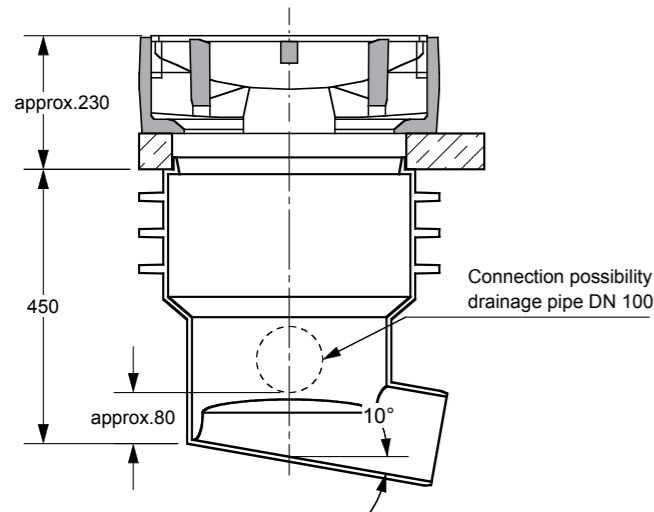
GRI 40.50.30.15/45 BI

Scan QR-Code for project questionnaire / see site questionnaire chapter



PE ROAD GULLY TYP GR

FOR DRY SLUDGE TOP UNIT 500 X 500,
BUCKET LOW VERSION FORM B1



PUBLIC TENDER TEXT EXAMPLE

ROMOLD PE road gullies DN 400, for top unit 300 x 500 mm, H= app. 45 cm

Typ: GR 40.50.30.15/45 BI

ROMOLD PE road gully DN 450, for grating 300 x 500 mm class C 250 or class D 400 in accordance with DIN EN 124/ DIN 1229, material PE, made with 100 % virgin material with no recycled parts or foaming agents. Resistant to aggressive wastewater, road salts and frost, consisting of base part (shorting dimension 460 mm) and turnable grating adapter. Base part with inlet option with 180° with 3-point support (self-standing), outlet connection DN /OD 315 or 250 mm, gradient app. 1%. Connection for PVC-KG pipes in accordance with DIN EN 1401, for PE pipes in accordance with DIN EN 1401, for PE pipes in accordance with DIN 8074/75 or DIN EN 12666 or PP pipes in accordance with DIN EN 1852, with horizontal ribs. Grating adapter with integrated shift protection, compatible with support ring 10b in accordance with DIN 4052-3 made of concrete or plastic, suitable for attachment of dirt bucket form D1 for DIN 4052-4-compliance. Color: black, Installation height: app. 160 cm (Overall installation height with standard grating: app. 180 cm).

System ROMOLD or equal



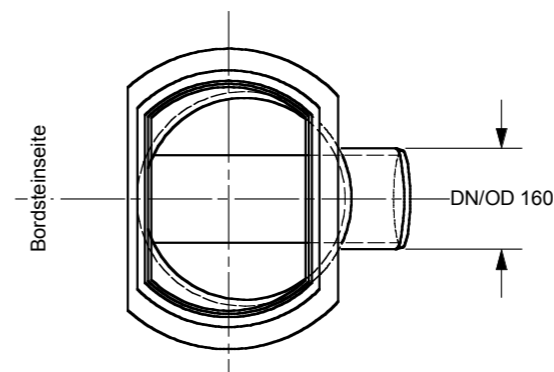
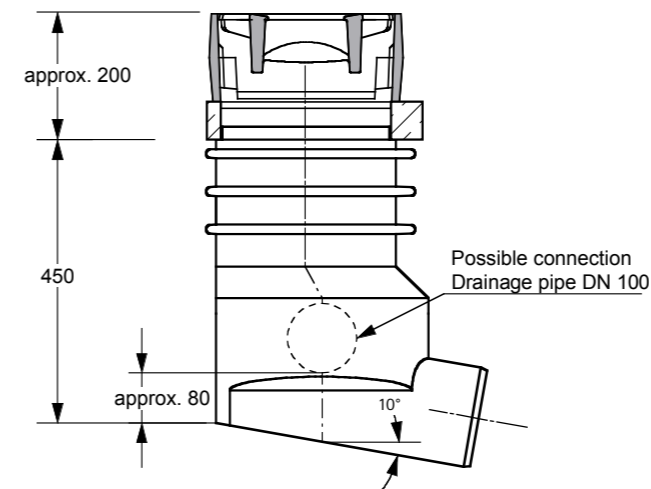
GR 40.50.50.15/45

KEY

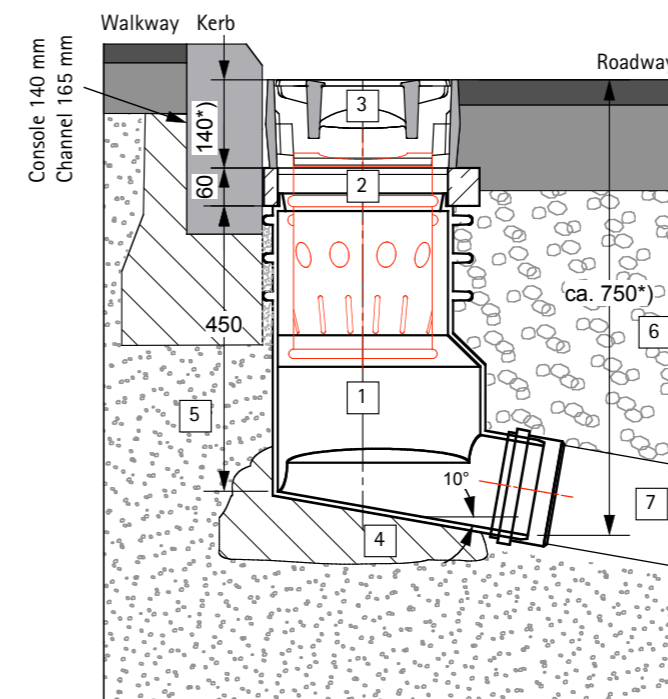
- 1 ROMOLD PE road gully
- 2 Load distribution ring plastic/concrete page 105
- 3 Grating 500 x 500, Class D acc. DIN 19594
- 4 Lean concrete bearing, h = mind. 10 cm
- 5 Compressible backfill material
- 6 Frost protection layer road bed
- 7 Connecting pipe line DN/OD 160

PE ROAD GULLY TYP GR

FOR DRY SLUDGE TOP UNIT 300 X 500,
BUCKET LOW VERSION FORM D1



For latest information on this topic, visit www.romold.de, menu products, submenu drainage systems/road gullies.



GR 40.50.30.15/45

KEY

- 1 ROMOLD PE road gully
- 2 Load distribution ring plastic/concrete page 105
- 3 Grating 300 x 500, Class D acc. DIN 19594
- 4 Lean concrete bearing, h = mind. 10 cm
- 5 Compressible backfill material
- 6 Frost protection layer road bed
- 7 Connecting pipe line DN/OD 160



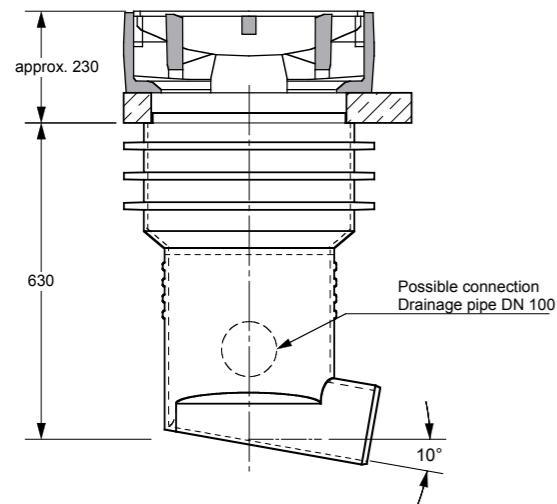
Scan QR-Code for project questionnaire / see site questionnaire chapter



PE ROAD GULLY TYP GR

FOR DRY SLUDGE

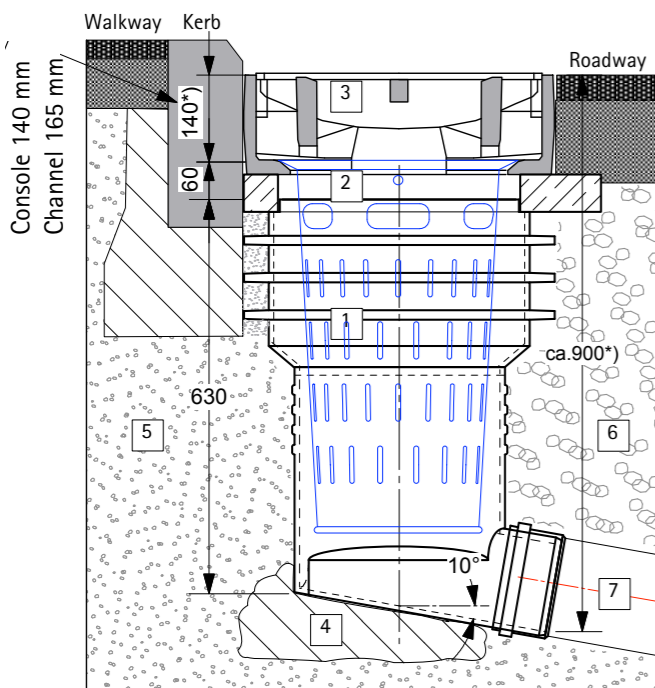
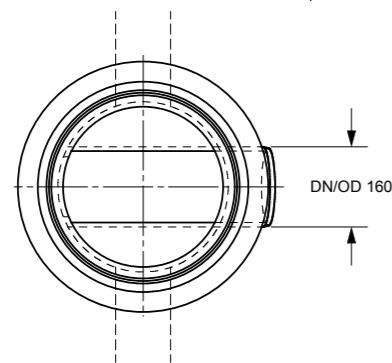
GRATING 500 X 500, BUCKET HIGH VERSION FORM A4



For latest information on this topic, visit www.romold.de, menu products, submenu drainage systems/road gullies.



Scan QR-Code for project questionnaire / see site questionnaire chapter



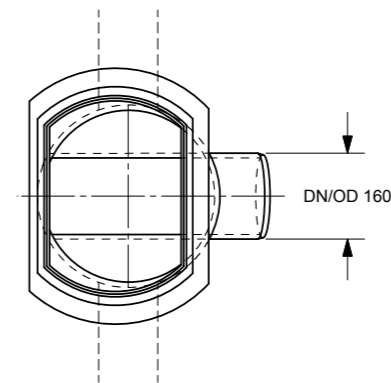
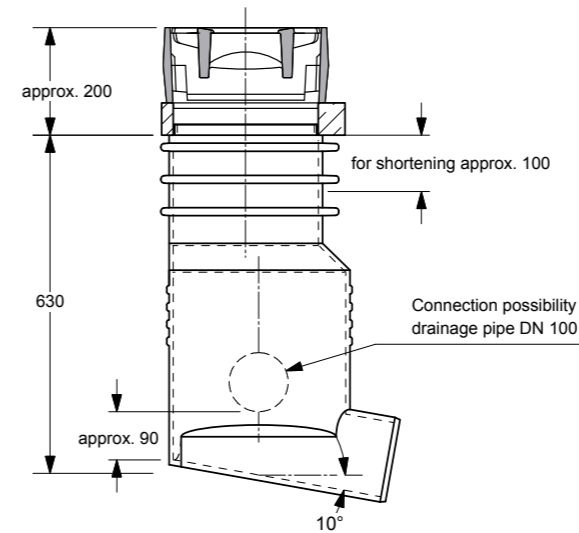
GR 40.50.50.15/63

- KEY**
- 1 ROMOLD PE road gully
 - 2 Load distribution ring plastic/concrete page 105
 - 3 Grating 500 x 500, Class D acc. DIN 19594
 - 4 Lean concrete bearing, h = mind. 10 cm
 - 5 Compressible backfill material
 - 6 Frost protection layer road bed
 - 7 Connecting pipe line DN/OD 160

PE ROAD GULLY TYP GR

FOR DRY SLUDGE

GRATING 300 X 500, BUCKET HIGH VERSION FORM C3



PUBLIC TENDER TEXT EXAMPLE

ROMOLD PE road gully DN 400,

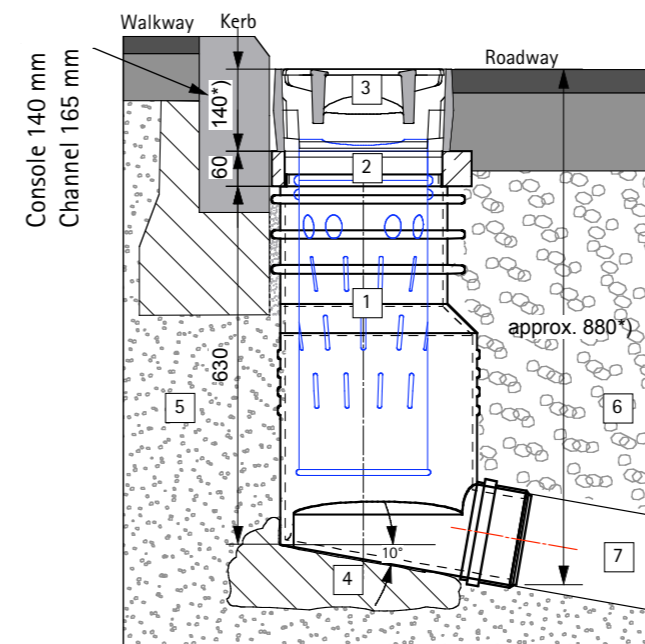
for grating

300 x 500 mm, H= ca. 63 cm

Typ: GR 40.50.30.15/63 BI

PE-road gully DN 400, for gratings 300 x 500 mm class C 250 or D 400 acc. DIN EN 124/ DIN 1229, material PE, road gully from 100 % new material without recycling and foaming agents, resistant against aggressive wastewater, de-icing salt and frost, outlet spigot DN/OD 160 mm, 10° sloped, connection for PVC-KG pipes acc. DIN EN 1401, PE-pipes acc. DIN 8074/75 or DIN EN 12666 and PP pipes acc. DIN EN 1852, with integrated slide guard suiting for load distribution ring 10b acc. DIN 4052-3, suitable for equipment with dirt bucket Form D1 acc. DIN 4052-4, with horizontally reinforcement ring, Colour: black, height: ca. 63 cm (total height with standard grating: ca. 83 cm), delivery/build-in according to the installation guide of the manufacturer.

System ROMOLD, or equal



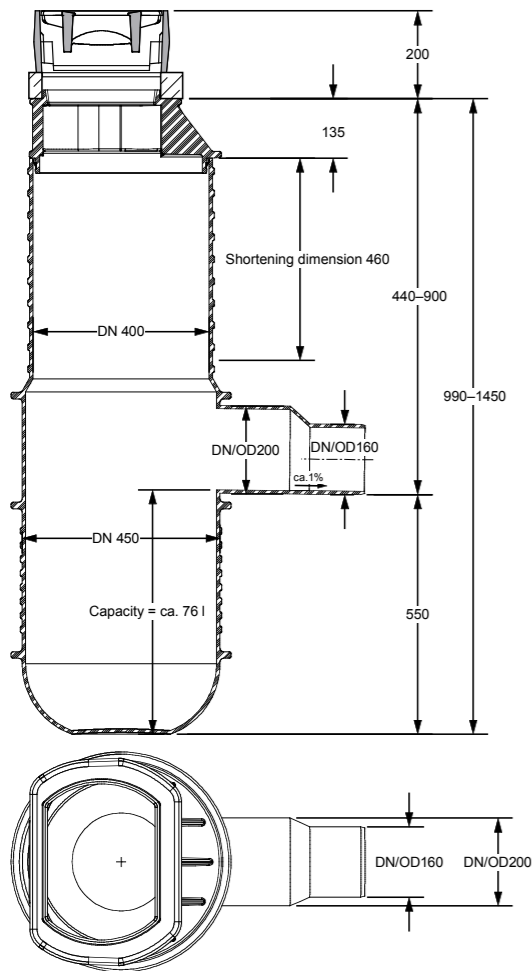
GR 40.50.30.15/63 BI

- KEY**
- 1 ROMOLD PE road gully
 - 2 Load distribution ring plastic/concrete page 105
 - 3 Grating 300 x 500, Class D acc. DIN 19594
 - 4 Lean concrete bearing, h = mind. 10 cm
 - 5 Compressible backfill material
 - 6 Frost protection layer road bed
 - 7 Connecting pipe line DN/OD 160

PE ROAD GULLY TYP GRT

WITH WET SLUDGE TRAP AND WITH REMOVABLE GRATING

500 X 500 OR 300 X 500, SAND TRAP APP. 76 L-156 L



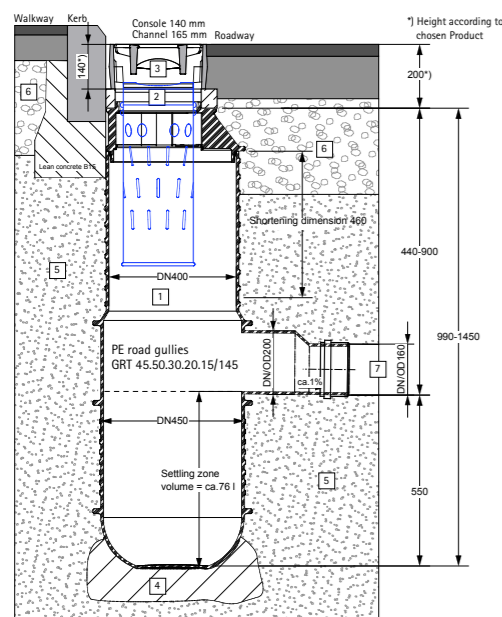
For latest information on this topic, visit www.romold.de, menu products, submenu drainage systems/road gullies.



Scan QR-Code for project questionnaire / see site questionnaire chapter



GRT 45.50.50.20.15/145

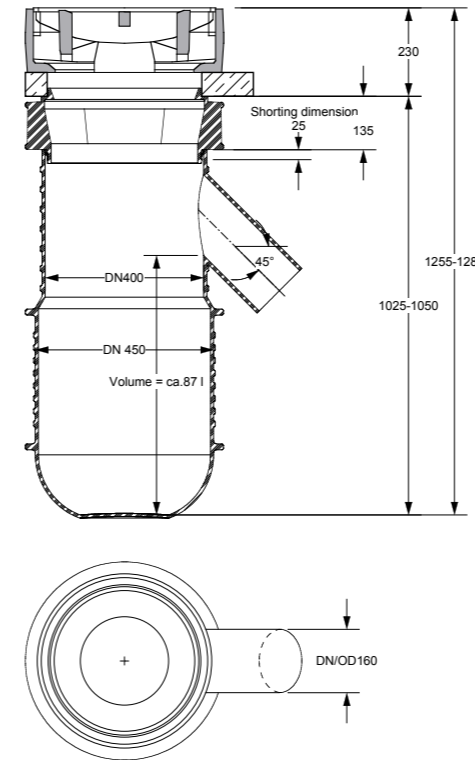


- KEY**
- 1 ROMOLD PE road gully
 - 2 Load distribution ring plastic/concrete page 105
 - 3 Grating 500 x 500 or 300 x 500, Class D acc. DIN 19594
 - 4 Lean concrete bearing, h = mind. 10 cm
 - 5 Compressible backfill material
 - 6 Frost protection layer road bed
 - 7 Connecting pipe line DN/OD 200 or 160

PE ROAD GULLY TYP GRT

WITH WET SLUDGE TRAP AND WITH REMOVABLE GRATING

500 X 500 OR 300 X 500, SAND TRAP APP. 87 L, OUTFLOW 45°



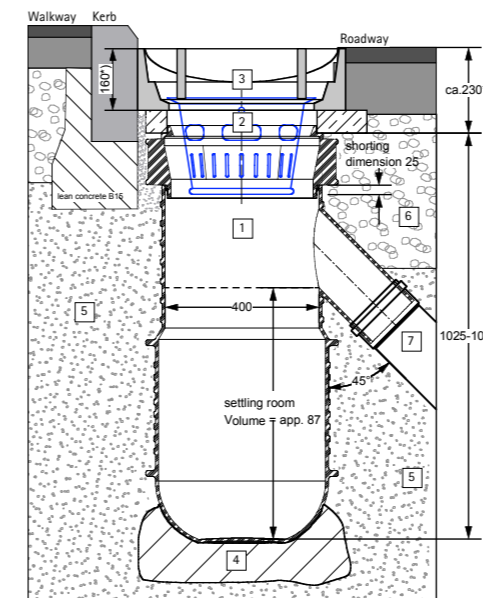
PUBLIC TENDER TEXT EXAMPLE

ROMOLD PE road gully DN 450, with sand trap for gratings 500 x 500 mm, H= app. 105 cm, outlet spigot DN/OD 160

Typ: GRT 45.50.50.15/105

ROMOLD PE road gully DN 450, for grating 500 x 500 mm class C 250 or class D 400 in accordance with DIN EN 124 / DIN 1229, material PE, made with 100 % virgin material with no recycled parts or foaming agents. Resistant to aggressive wastewater, road salts and frost, consisting of base part (shortening dimension 460 mm) and turnable grating adapter. Base part: Round bottom with flat support surface (self-standing), optimised form for cleaning with suction tube, outlet connection DN /OD 200 or 160 mm, gradient app. 1 %, outlet app. 55 cm above ground, storage volume app. 76 liter. Connection for PVC-KG pipes in accordance with DIN EN 1401, for PP pipe in accordance with DIN EN 1852 or for PE pipes in accordance with DIN 8074/75 or DIN EN 12666, with horizontal ribs. Grating adapter with integrated shift protection suitable for concrete support ring 10a in accordance with DIN 4052-3, suitable for attachment of dirt bucket form B1 in accordance with DIN 4052-4. Color: black, installation height: app. 145 cm (total installation height with standard grating: app. 168 cm).

System ROMOLD or equal.



- KEY**
- 1 ROMOLD PE road gully
 - 2 Load distribution ring plastic/concrete page 105
 - 3 Grating 500 x 500 or 300 x 500, Class D acc. DIN 19594
 - 4 Lean concrete bearing, h = mind. 10 cm
 - 5 Compressible backfill material
 - 6 Frost protection layer road bed
 - 7 Connecting pipe line DN/OD 160



GRT 45.50.30.15/105



GRT 45.50.50.15/105

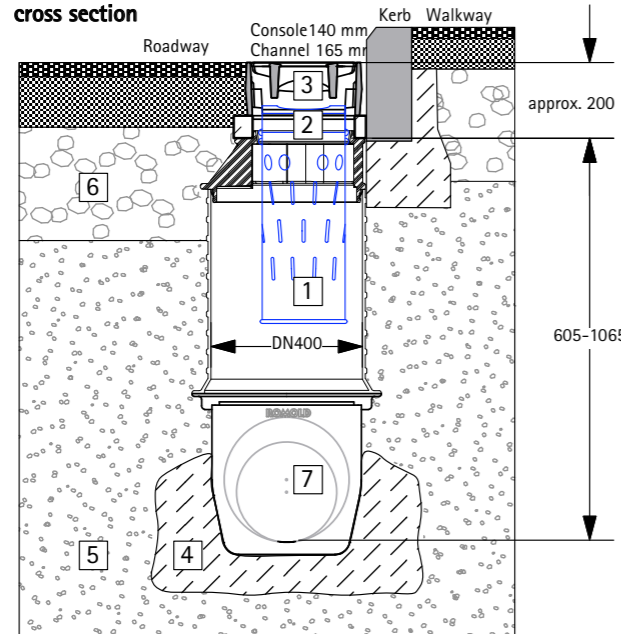
PE-ROAD GULLY TYP GRT 1B

FOR LONGITUDINAL DRAINAGE WITH REMOVABLE GRATING
500 X 500 OR 300 X 500

GRT 1B 45.50.XX.20.15/90
Height from 60 cm to 160
cm incl. turnable grating.
Pipe joint DN/OD 200 and
DN/OD 160

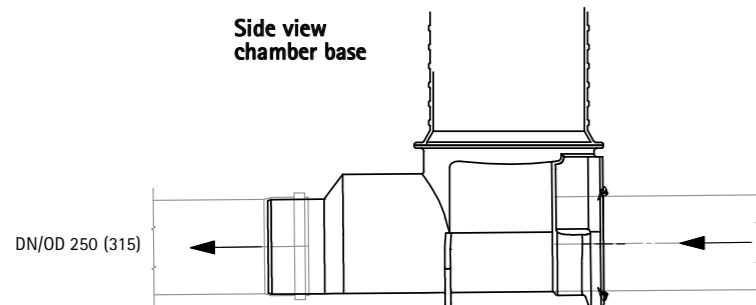


Roadway - cross section

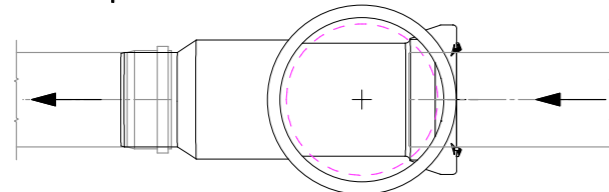


GRT E 40/55
Height 55 cm
shorting dimension 45 cm
incl. seal
GRT ES 039

Side view chamber base



Top view

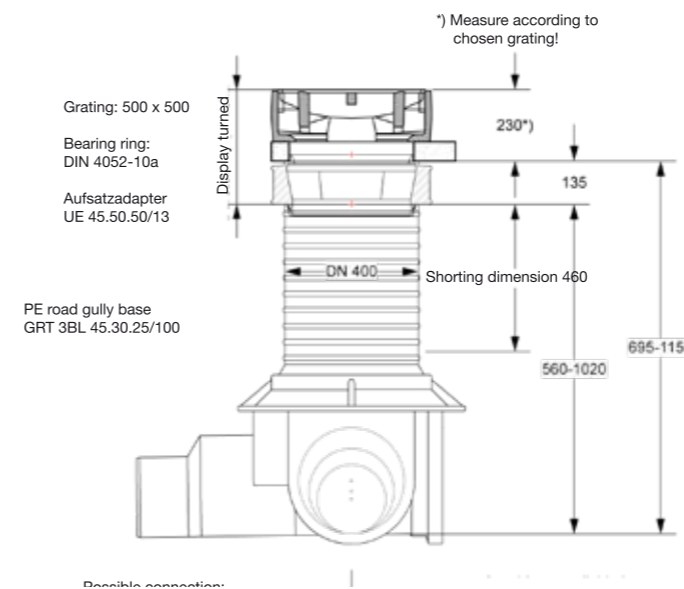


KEY

- 1 ROMOLD PE road gully
- 2 Load distribution ring plastic/concrete page 105
- 3 Grating 500 x 500 or 300 x 500, Class D acc. DIN 19594
- 4 Lean concrete bearing, h = mind. 10 cm
- 5 Compressible backfill material
- 6 Frost protection layer road bed
- 7 Connecting pipe line DN/OD 2050 bzw. 315

PE-ROAD GULLY TYP GRT 3B AND 3BL

FOR LONGITUDINAL DRAINAGE WITH REMOVABLE GRATING
500 X 500 OR 300 X 500



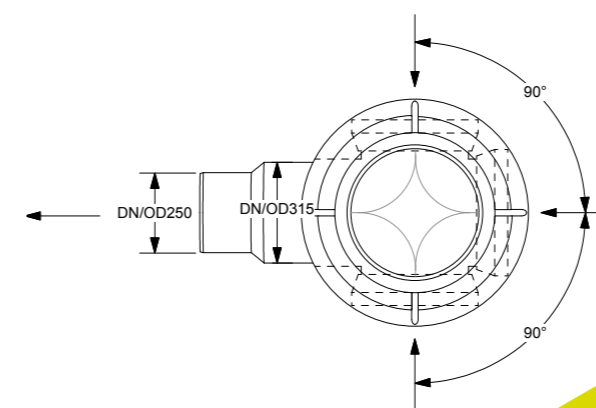
PUBLIC TENDER TEXT EXAMPLE

ROMOLD PE road gully DN 450, longitudinal drainage for grating 300 x 500 mm, H= app. 115 cm, outlet spigot DN/OD 315 and 250

Typ: GRT 3BL 45.50.30.30.25/115

ROMOLD PE road gully DN 450, for grating 300 x 500 mm class C 250 or class D 400 in accordance with DIN EN 124 / DIN 1229, material PE, made with 100 % virgin material with no recycled parts or foaming agents. Resistant to aggressive wastewater, road salts and frost, consisting of base part (shorting dimension 460 mm) and turnable grating adapter. Base part with inlet option with 180° with 3-point support (self-standing), outlet connection DN /OD 315 or 250 mm, gradient app. 1%. Connection for PVC-KG pipes in accordance with DIN EN 1401, for PE pipes in accordance with DIN 8074/75 or DIN EN 12666 or PP pipes in accordance with DIN EN 1852, with horizontal ribs. Grating adapter with integrated shift protection, compatible with support ring 10b in accordance with DIN 4052-3 made of concrete or plastic, suitable for attachment of dirt bucket form D1 for DIN 4052-4-compliance. Color: black, Installation height: app. 160 cm (Overall installation height with standard grating: app. 180 cm).

System ROMOLD or equal.



GRT 3B 45.50.XX.20.15/90
Height from 60 cm to 160
cm incl. turnable grating.
pipe connection DN/OD
200 / DN/OD 160

GRT 3BL 45.50.
XX.30.25/115
Height from 70 cm to
150 cm
incl. turnable grating.
pipe joint DN/OD
315 and DN/OD 250



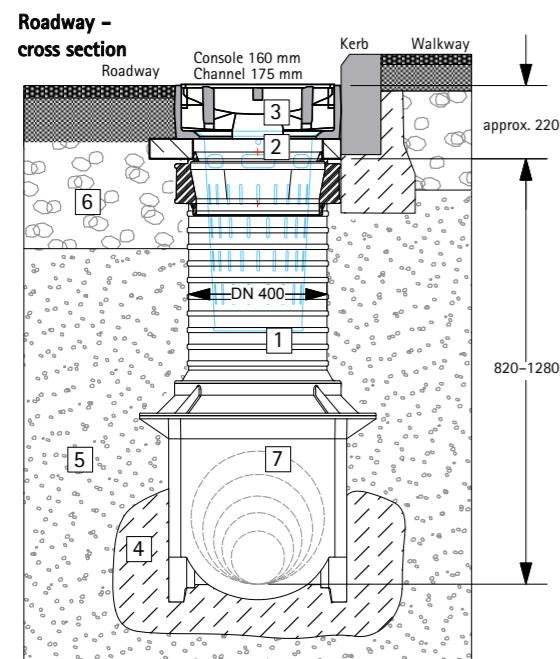
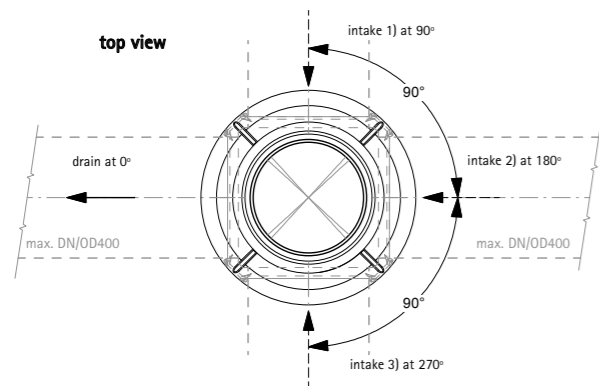
For latest information on this topic, visit www.romold.de, menu products, submenu drainage systems/road gullies

Scan QR-Code for project questionnaire / see site questionnaire chapter



PE ROAD GULLY TYP GRT BL

FOR LONGITUDINAL DRAINAGE WITH TURNABLE GRATING
500 X 500 OR 300 X 500



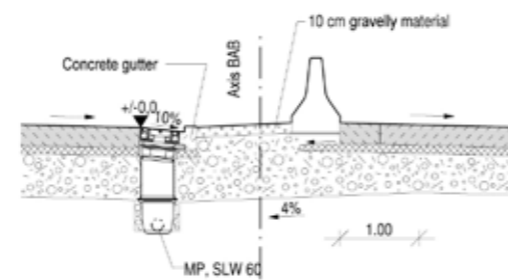
PUBLIC TENDER TEXT EXAMPLE

ROMOLD PE road gully DN 450, longitudinal drainage for grating 500 x 500 mm, H = approx. 130 cm, Connection up to DN/OD 400

Typ: GRT 3BL 45.50.50.40/130

ROMOLD PE road gully DN 450, for grating 500 x 500 mm class C 250 or class D 400 according to DIN EN 124 / DIN 1229, material PE, aus 100 % made with 100 % virgin material with no recycled parts or foaming agents. Resistant to aggressive wastewater, road salts and frost, consisting of base part (shorting dimension 460 mm) and turnable grating adapter, base part with 3 possible connections at 90°, 180° and 270°, selfstanding, Slope approx. 1 %. Inlets and outlet for connection spiky end for PVC-KG pipes according to DIN EN 1401, for PE pipes according to DIN 8074/75 respectively DIN EN 12666 or PP pipes acc. to DIN EN 1852, with level ribs. Grating adapter with integrated shift protection, compatible with support ring 10a acc. to DIN 4052-3 made of concrete or plastic, suitable for attachment of dirt bucket form B1 acc. to DIN 4052-4. Color: black, height: approx. 130 cm (Overall installation height with standard grating: ca. 145 cm). Delivery and setting according to the manufacturer installation notes.

System ROMOLD or equal.



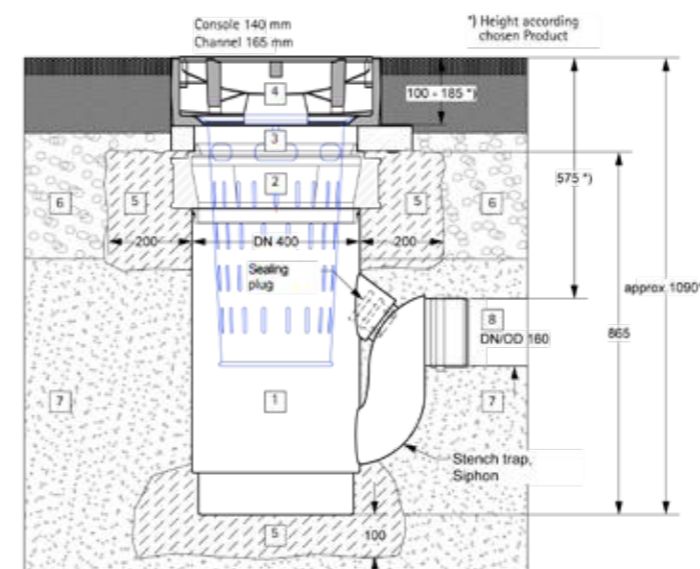
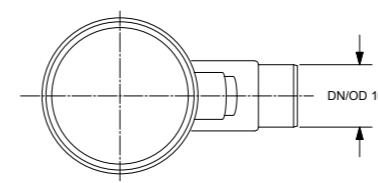
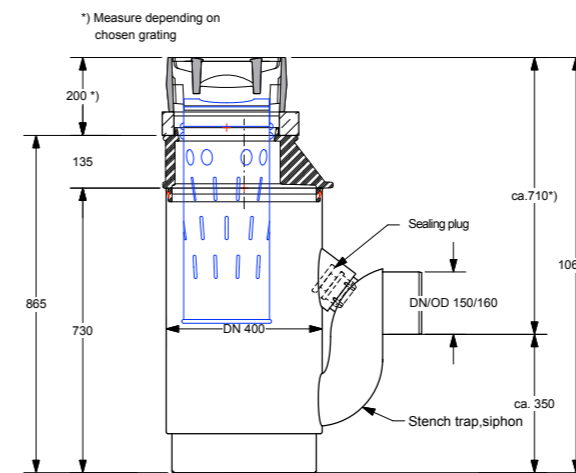
Exa,ple: Rule profile Motorway central strip

KEY

- 1 ROMOLD PE road gully
- 2 Load distribution ring plastic/concrete DIN 4052-10A
- 3 Grating 500 x 500 or 300 x 500, Class C/D acc. to DIN 19594
- 4 Lean concrete bearing, h = mind. 10 cm
- 5 Backfill material G1 or G2 according to ATV A 127
- 6 Frost protection layer road bed
- 7 Possibility of connection on intakes 0°/90°/180°/270°: DN/OD 110-400 with seal IS 110-400

PE ROAD GULLY TYP GST

WITH STENCH TRAP GRATING 500 X 500,
OR GRATING 300 X 500



PUBLIC TENDER TEXT EXAMPLE

ROMOLD PE road gully with sand trap and Siphon, Grating 500 x 500 mm, H = app. 86 cm,

Typ: GST 40.50.50.15/86 P

ROMOLD PE road gully DN 400, for grating 500 x 500 mm class C 250 or class D 400 in accordance with DIN EN 124 / DIN 1229, material PE, made with 100 % virgin material with no recycled parts or foaming agents. Resistant to aggressive wastewater, road salts and frost, consisting of base part and turnable grating adapter, outlet connection DN /OD 315 or 250 mm, gradient app. 1%. Connection for PVC-KG pipes in accordance with DIN EN 1401, for PE pipes in accordance with DIN 8074/75 or DIN EN 12666 or PP pipes in accordance with DIN EN 1852. Road gully with stench trap/siphon incl. cross connection for camera inspection or cleaning device. Cross connection with sealing plug vrom NBR for sealing in opae-rating status and for extraction while cleaning and inspection works. Grating adapter with integrated shift protection, compatible with support ring 10b in accordance with DIN 4052-3 made of concrete or plastic, suitable for attachment of dirt bucket form D1 for DIN 4052-4-compliance. Color: black, Installation height: app. 160 cm (Overall installation height with standard grating: app. 106 cm). Delivery and setting according to the manufacturer installation notes.

System ROMOLD or equal.

For latest information on this topic, visit www.romold.de, menu products, submenu drainage systems/road gullies.



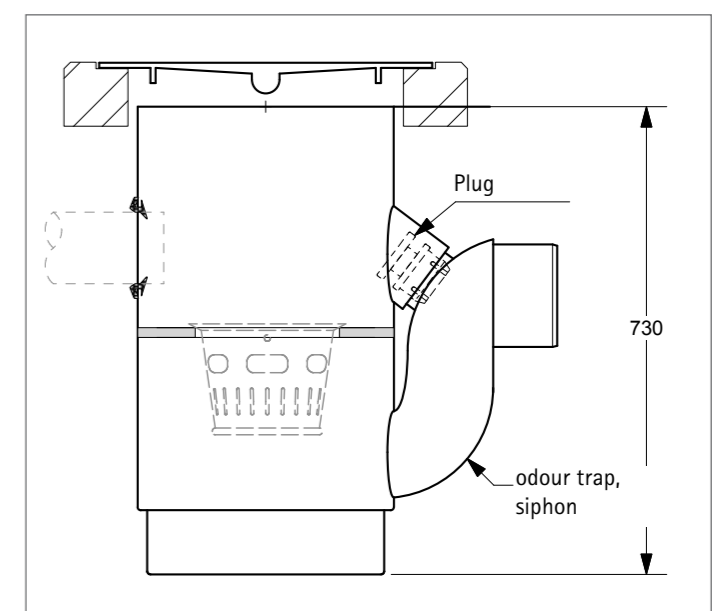
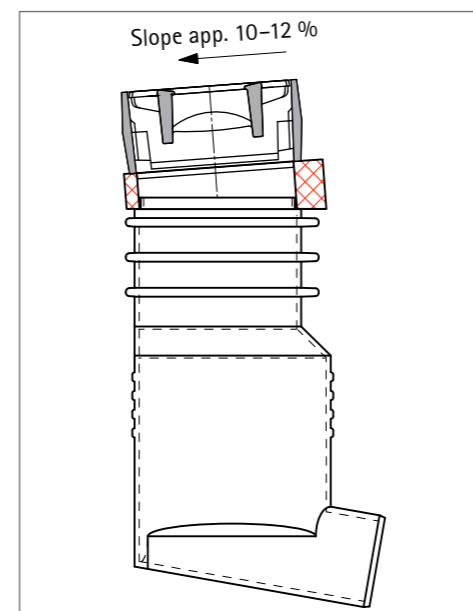
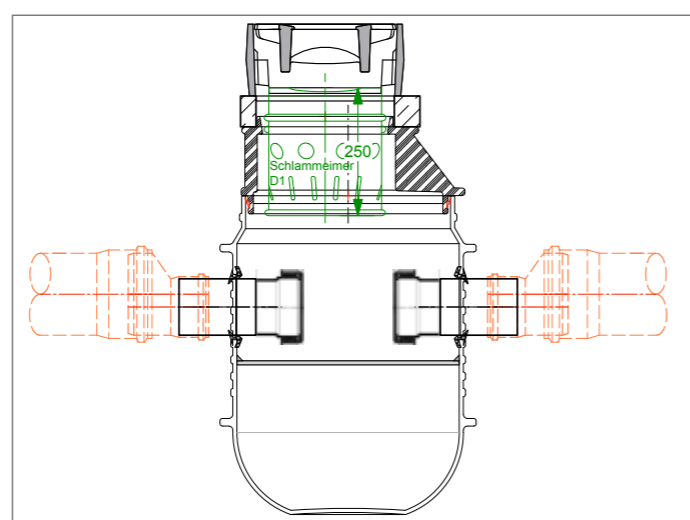
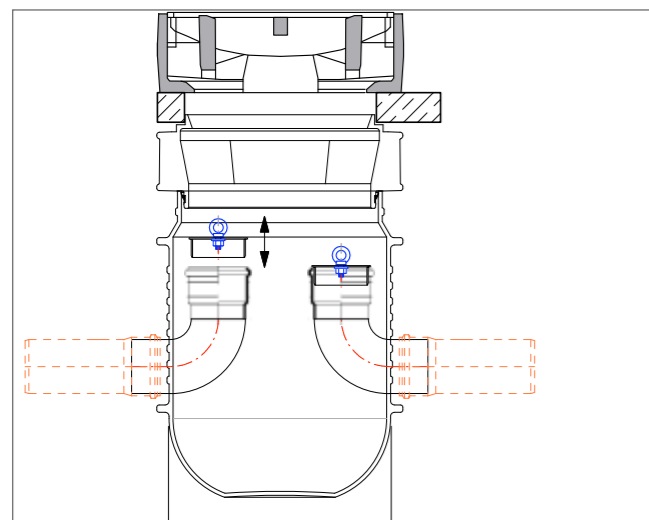
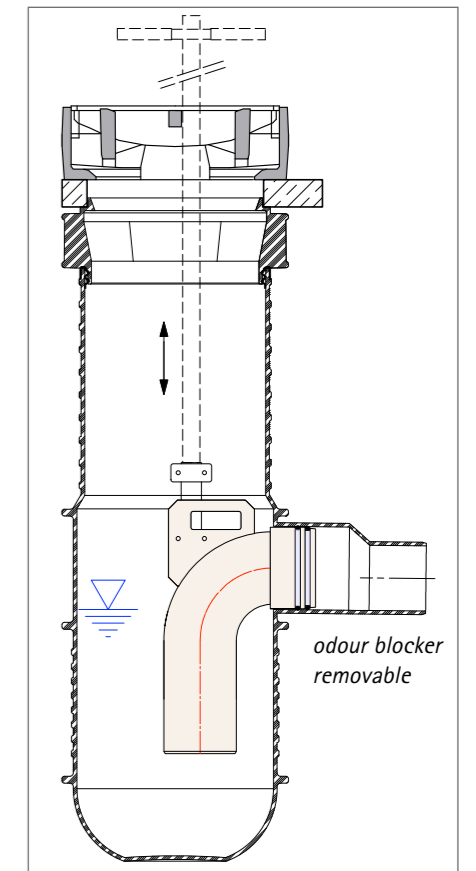
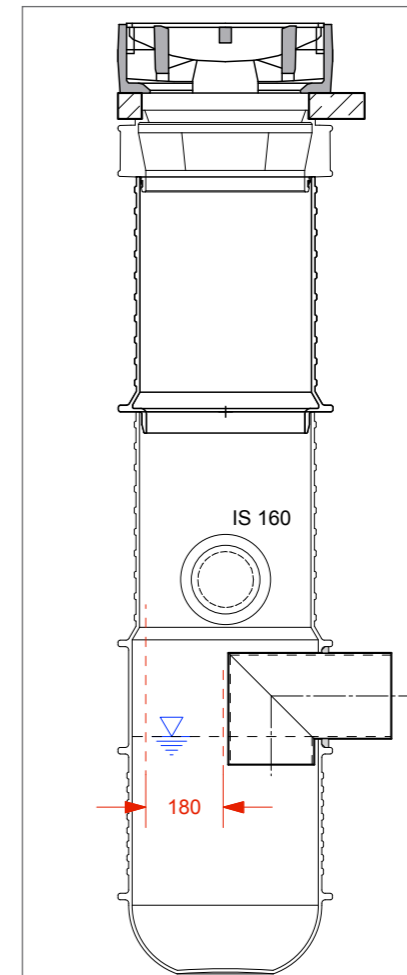
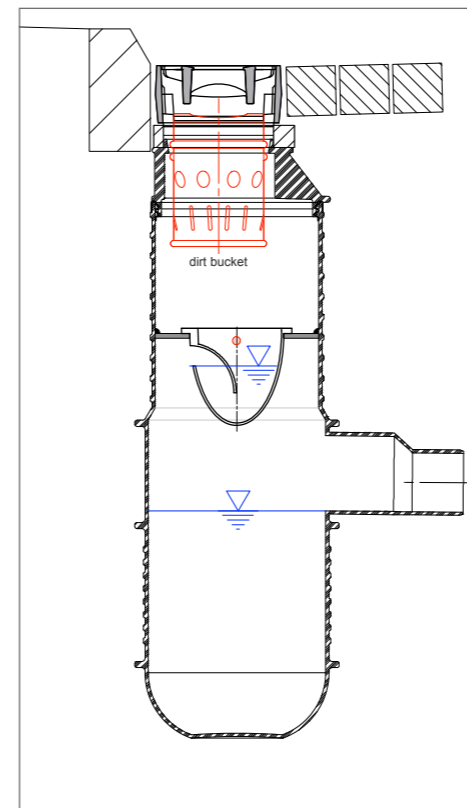
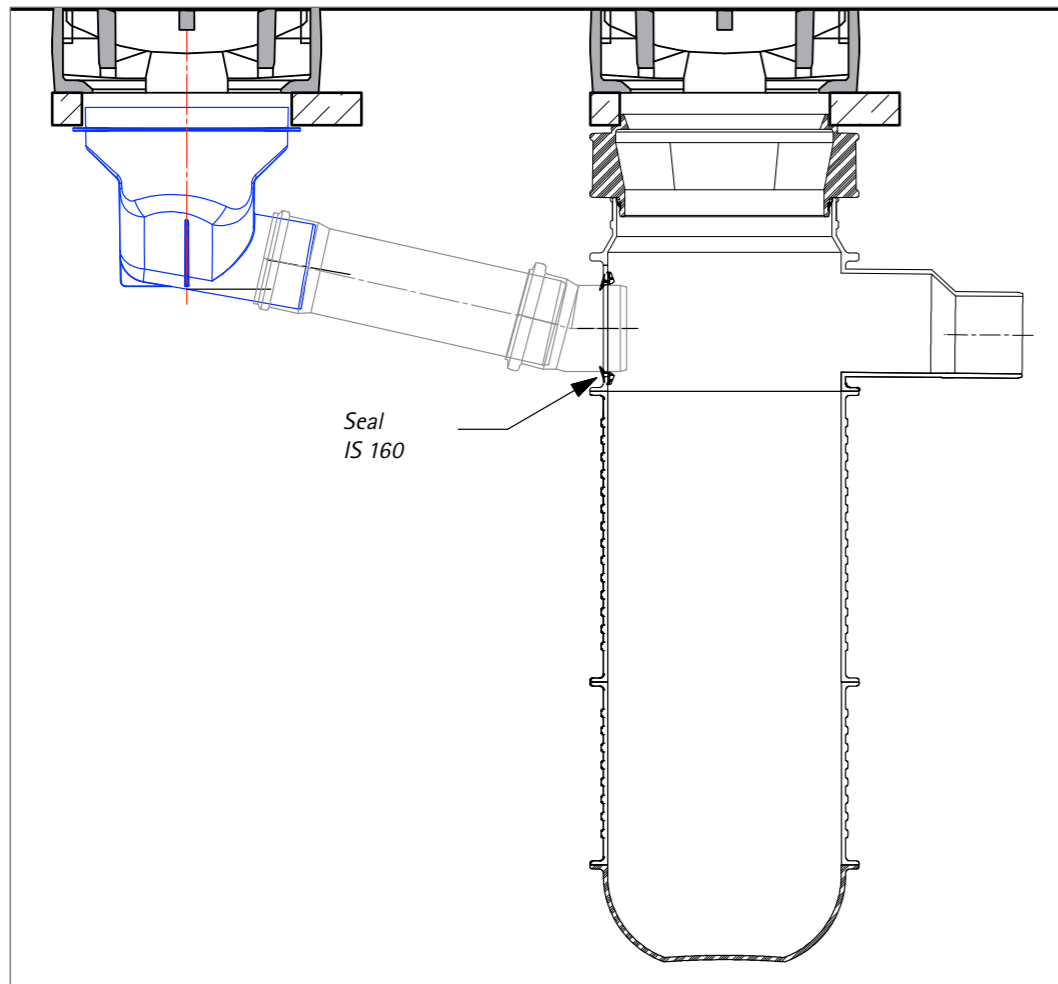
Scan QR-Code for project questionnaire / see site questionnaire chapter

KEY

- 1 ROMOLD PE road gully
- 2 Grating adaptor
- 3 Load distribution ring plastic/concrete refer to page 105
- 4 Grating 500 x 500 or 300 x 500, Class D acc. to DIN 19594
- 5 Lean concrete
- 6 Frost protection layer road bed
- 7 Backfill material G1 or G2 according to ATV A 127
- 8 Connectivity pipe DN/OD 160

SPECIAL SOLUTIONS

EXECUTION EXAMPLE



ROAD GULLIES

PRICES AND DETAILS

Ask about our special offer prices. These vary depending on order quantity.

All ROMOLD road gullies are designed for usage commercial inlet grates and dirt buckets

Height cm	Details for version dry slugde	Article name	Price €
35-45	for socket-ended pipes, PP, straight outlet, horizontal reinforcement rings, outlet connection ND /OD 160, Grating 500 x 500 mm or 500 x 300 mm	GRI 40.50.30.15/45 BI	*
		GRI 40.50.50.15/45 BI	*
45	as well for welded systems, PE, straight outlet, horizontal reinforcement rings, outlet connection ND /OD 160, Grating 500 x 500 mm or 500 x 300 mm	GR 40.50.30.15/45 BI	*
		GR 40.50.50.15/45 BI	*
63	as well for welded systems, PE, straight outlet, horizontal reinforcement rings, outlet connection ND /OD 160 for high dirt bucket, grating 500 x 500 mm or 500 x 300 mm	GR 40.50.30.15/63 BI	*
		GR 40.50.50.15/63 BI	*

Height cm	outlet	Details for version longitudinal drainage	Article name	Price €
60-105	DN/OD 200/160	Road gully DN 450 for longitudinal drainage, 1° gradient, turnable Grating 500 x 500 optionally 500 x 300 with element seal, outlet DN/OD 200 and 160, 2 additional inlets DN/OD 200 and 160, can be shortened	GRT 1B 45.50.XX.20.15/105	*
60-105	DN/OD 200/160	Road gully DN 450 for longitudinal drainage, outlet DN /OD 315 and 250, 1° gradient, turnable Grating 500 x 500, optionally 500 x 300, with element seal, can be shortened	GRT 3B 45.50.XX.20.15/105	*
70-115	DN/OD 315/250	Road gully ND 450 for longitudinal drainage, outlet ND /OD 315 and 250, 1° gradient, turnable Grating 500 x 500, optionally 500 x 300, with element seal, 3 level even inlet options DN/OD 315 and 250 at 90°, 180° and 270°, can be shortened	GRT 3BL 45.50.XX.30.25/115	*
130	DN/OD 315/250	GRT mit channel 400	GRT 3BL 45.50.50.40/130	*
130			GRT 3BL 45.50.30.40/130	*

Height cm	outlet	Details for version wet sludge trap	Article name	Price €
103-105	DN/OD 160	For welded systems and socket-ended pipes, turnable Grating 500 x 500 mm or 500 x 300 mm, outlet connection tilted by 45°, Storage volume app. 87 l	GRT 45.50.50.15/105	*
			GRT 45.50.30.15/105	*
100-145	DN/OD 200/160	For welded systems and socket-ended pipes, turnable Grating 500 x 500 mm or 500 x 300 mm, can be shortened, Storage volume app. 78 l	GRT 45.50.50.20.15/145	*
			GRT 45.50.30.20.15/145	*

Height cm	Details for version stench trap	Article name	Price €
86	With stench siphon, as well for welded systems with turnable grating, splitter for cleaning option, outlet connection ND /OD 160 for grating 500 x 500 mm or 500 x 300 mm	GST 40.50.50.15/86 P	*
		GST 40.50.30.15/86 P	*

Height cm	Details	Article name	Price €
15-55	Extention for ROMOLD road gully Typ GRT and GST	GRT E 40/55	*
6	Plastic support ring for road gully with grate 500 x 500	PARD 50.50/06	*
6	Plastic support ring for road gully with grate 500 x 500	PARD 50.30/05	*
8/12	Plastic support ring for road gully with grate 300 x 500 with cross slope of 2 % for the installation in the in der spiky gullyw oder pendulum gully	PARD 50.30/12 K	*
	Lip seal for connecting street drainage elements	ES 039 W	

Odour blocker details	Article name	Price €
Odour stop for retrofitting in GRT wet sludge traps with low overall height	GRT Odour blocker	
Odour stop for retrofitting in GRT wet sludge traps with high overall height including sleeve for seating a lifting bar, including base installation aids	GRT Odour blocker with sleeve	

All ROMOLD road gullies are designed for usage commercial inlet grates and dirt buckets

Version	Bases	Element seal ES 039W	Extension GRT E 40/55*	Adapter U 45.50.50/13*	Adapter GRT UE 45.50.30/13*	Load distribution ring PARD 50.50/06*	Load distribution ring PARD 50.30/05*	Height from-to cm complete without grate	Price €
---------	-------	----------------------	------------------------	------------------------	-----------------------------	---------------------------------------	---------------------------------------	--	---------

dry slugde	50x50	dry slugde							
		GRI 40.50.50.15/45 BI	GR 40.50.50.15/45 BI	GR 40.50.50.15/63 BI	GRI 40.50.30.15/45 BI	GR 40.50.30.15/45 BI	GR 40.50.30.15/63 BI		
						1		51	*
						1		51	*
						1		69	*
	50x30						1	51	*
							1	51	*
							1	69	*

longitudinal drainage	50x50	longitudinal drainage								
		GRT 1B 45.50.50.20.15/105	GRT 1B 45.50.50.20.15/160	GRT 3B 45.50.50.20.15/105	GRT 3B 45.50.50.20.15/160	GRT 3BL 45.50.50.30.25/115	GRT 3BL 45.50.50.30.25/170	GRT 3BL 45.50.50/130	GRT 3BL 45.50.50/185	
		1		1		1		65-111	*	
		2	1	1		1		111-166	*	
		1		1		1		65-111	*	
		2	1	1		1		111-166	*	
		1		1		1		75-121	*	
		2	1	1		1		121-176	*	
		1		1		1		90-136	*	
		2	1	1		1		136-191	*	
longitudinal drainage	50x30	GRT 1B 45.50.30.20.15/105	1			1		1	65-111	*
		GRT 1B 45.50.30.20.15/160	2	1		1		1	111-166	*
		GRT 3B 45.50.30.20.15/105	1			1		1	65-111	*
		GRT 3B 45.50.30.20.15/160	2	1		1		1	111-166	*
		GRT 3BL 45.50.30.30.25/115	1			1		1	75-121	*
		GRT 3BL 45.50.30.30.25/170	2	1		1		1	121-176	*
		GRT 3BL 45.50.30/130	1			1		1	90-136	*
		GRT 3BL 45.50.30/185	2	1		1		1	136-191	*

*The numbers in italix describe the grating size of the road gully (50 x 50/50 x 30), the last number after the slash is the height of the original individual part in cm. Extensions can be shortened.

ROAD GULLIES

PRICES AND DETAILS

All ROMOLD road gullies are designed for usage commercial inlet grates and dirt buckets

Version		Bases	Element seal ES 039W	Extension GRT E 40/55*	Adapter U 45.50.50/13*	Adapter GRT UE 45.50.30/13*	Load distribution ring PARD 50.50/06*	Load distribution ring PARD 50.30/05*	Height from-to cm complete without grate	Price €	
wet sludge trap	50x50	GRT 45.50.50.15/105	1		1		1		105-111 cm		
		GRT 45.50.50.15/160	2	1	1		1		176-221 cm		
		GRT 45.50.50.20.15/145	1		1		1				
		GRT 45.50.50.20.15/200	2	1	1		1				
	50x30	GRT 45.50.30.15/105	1			1		1			
		GRT 45.50.30.15/160	2	1		1		1			
		GRT 45.50.30.20.15/145	1			1		1			
		GRT 45.50.30.20.15/200	2	1		1		1			
stench trap	50 x 50	GST 40.50.50.15/86 P					1				
	50x30	GST 40.50.30.15/86 P					1				

*The numbers in italics describe the grating size of the road gully (50 x 50/50 x 30), the last number after the slash is the height of the original individual part in cm. Extensions can be shortened.

ACCESSORIES ROAD GULLIES



PLASTIC LOAD DISTRIBUTION RING

from recycling material for road gullies. Measurement analog to DIN 4052-3, Typ 10a or 10b, height approx. 60 mm

PARD 50.50/06

with inlet grate 500 x 500, Weight approx. 13 kg

PARD 50.30/05

with inlet grate 300 x 500, Weight approx. 4,1 kg

PARD 50.30/12K

Plastic load distribution ring from recycling material for road gullies with inlet grate 300 x 500, measurement analog to DIN 4052-3, Typ 10b, with cross slope 12 % for the installation in the spiky gully or pendulum gully.

Height approx. 80/120 mm,

Weight approx. 9 kg

REMOVABLE ADAPTER

ROMOLD PE chamber construction DN 450/500/300

GRT UE 45.50.30/13

500 x 300 mm
Height: 13 cm

GRT U 45.50.50./13

500 x 500 mm
Height: 13 cm

EXTENSION FOR ROAD GULLIES

from Typ GRT and GST incl. seal.

GRT E 40/55

Height 55 cm,
Shorting dimension 45 cm



GRT ODOUR BLOCKER

Odour stop retrofit upgrade available for GRT wet sludge traps.



Pendelrinne: optimal gelöst mit ROMOLD

Resistance as well against high installation temperature from asphalt



ASSEMBLY- AND INSTALLATION NOTES FOR ONE-PIECE ROAD GULLIES



For assembly- and installation notes „to go“, scan QR-Code.

1. GENERAL INFORMATION

ROMOLD PP/PE road gullies are delivered ready for connection.

All components must be checked for damage or contamination before installation and if necessary cleaned or replaced. Damaged components may not be installed!

Technical details:

- Material: made of 100 % virgin material Polyethylen (PE) or Polypropylen (PP)
- Pipe line pluggable or weldable (with waste water welding socket)
- Connection nominal diameter DN/OD 160
- suitable for commercial gratings 500 x 300 mm or 500 x 500 mm

2. EXCAVATION

The excavation or the size of the head hole has to be created in a way, that there is enough workspace for the necessary work.

3. INSTALLATION

Compress the natural ground if needed.

The bearing of the road gully has to be of minimum 10 cm concrete granular subbase. C12/15. Hereby the road gully has to be bedded up to the apex area in concrete or support it from the side.

It is recommended to connect the outlet pipe before positing of the road gully. The filling on the side of the road gully to be

produced with suiting backfilling material (non-cohesive earth or earth of low cohesion acc. to DIN 18196, e. g.: Kgravel/sand mixture, natural grain material particle size 0–32 mm or crushed material particle size 0–16 mm).

Arrange the backfilling material in layers and compress it. If necessary can the road gully be cut by max. 10 cm with a saw suiting for woodworking. The shortening has to be done always underneath the ribs, that the shift protection for the load distribution ring stays put. The ribs on the building part must be bedded completely and carefully in backfilling material or frost protection material (big stones has to be removed). Potential hallows between kerb and the back of road gully are to be filled with trickling material or concrete.

4. TOP PART

Upside the road gully the load distribution ring acc. to DIN 4052, Typ 10a for grating 500 x 500 mm or Typ 10b for grating 500 x 300 mm has to be put on. The use of polymer load distribution rings (dimensions acc. to DIN 4052, Typ 10a or Typ 10b) is possible. Further are the polymer load distribution rings with cross slope for use in spiky gully

Moreover polymer load distribution rings with cross slope are offered from ROMOLD for the use in spiky and pendulum gully. On top of the load distribution ring commercial inlet grates are to be placed.



GRI 40.50.30.15/45 BI



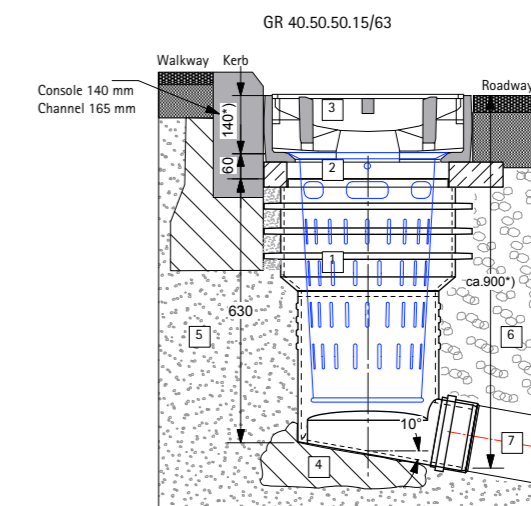
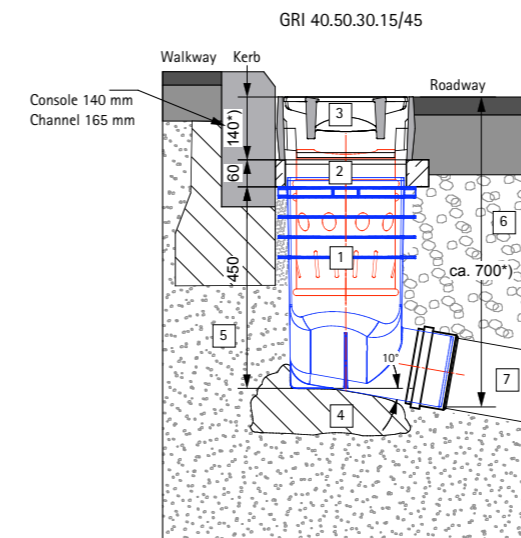
GRI 40.50.50.15/45 BI



GR 40.50.50.15/45 BI



GR 40.50.50.15/63 BI



KEY

- 1 ROMOLD PP road gully
- 2 Load distribution ring plastic/concrete page 73
- 3 Grating 450 x 450, Class C/D acc. ÖNorm B 5110
- 4 Lean concrete bearing, h = mind. 10 cm
- 5 Compressible backfill material
- 6 Frost protection layer road bed
- 7 Connecting pipe line DN/OD 160



3. Min.: bedding in lean concrete mix



5. Min.: height adjustment



7. Min.: backfilling and compacting



15. Min.: assembly of grating

ASSEMBLY- AND INSTALLATION NOTES FOR TWO-PIECE ROAD GULLIES WITH WET SLUGDE TRAP



For assembly- and installation notes „to go“, scan QR-Code.

1. GENERAL INFORMATION

ROMOLD PE road gullies are provided ready to connect. All components must be checked for damage or contamination before installation and if necessary cleaned or replaced. Damaged components may not be installed! All supplied element seals have to be stored packed, protected from frost and direct sunlight.

Technical details:

- Material: made of 100 % virgin material Polyethylen (PE)
- Pipe line for socket-ended- bzw. welded possible (with wastewater-welding socket)
- Connection nominal diameter: DN/OD 160 to DN/OD 200
- Suiting for commercial gratings 500 x 300 mm respectively 500 x 500 mm

2. EXCAVATION

The Excavation respectively the size of the head hole has to be made in a way that there is enough work room for the necessary working steps.

3. INSTALLATION

The upcoming ground compressing if needed.

The bearing of the road gully has to be executed from a at least 10 cm strong concrete granular subbase C12/15. Adjust road gul-

ly according to the outlet direction. Then bed the gully at least up to the OK semi-ball in concrete or support it laterally.

The laterally filling of the road gully is to be made with suiting filling material (non cohesive or low cohesive soils as per DIN 18196, e.g. gravel/sand mixture, natural grain material particle size 0 to 32 mm or crushed material particle size 0 to 16 mm). Build in the filling material in layers and compress it.

For connection of pipe DN/OD 200 cut the outlet nozzle DN/OD 160 and deburr it. Sockets with smooth walled plastic pipes can be directly connected, for other pipe materials or profiled pipes has to be used conversion adapters. If needed can the bottom part of the road gully (depends on the version) be shortened with a wood saw in the cylindrical part for max. 46 cm respectively max. 2,5 cm.

Eventual cut surfaces are to be deburred and than the item seal put on at the above end. Clean ROMOLD item seal, if necessary and provide it with enough lubricant.

For the next step put up the conversion adapter without tilting on the kerb and bring together to the stop. The ribs on the building part have to be completely bedded carefully in backfill material respectively frost protection material (remove big stones). The connection of drainage pipes or additional pipe connections takes place through bore of the road gully (in cylindrical parts) with a core drill and the insertion of a lip seal. Core drill and lip seal are available as accessories from ROMOLD.



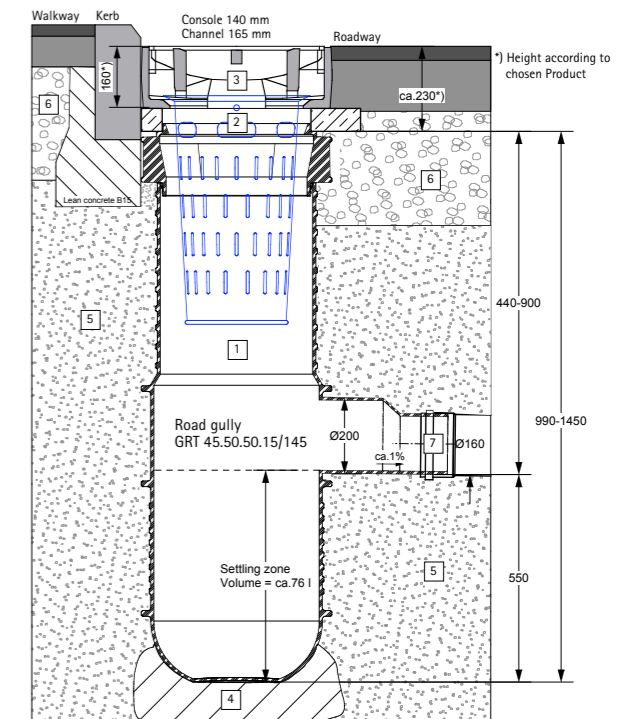
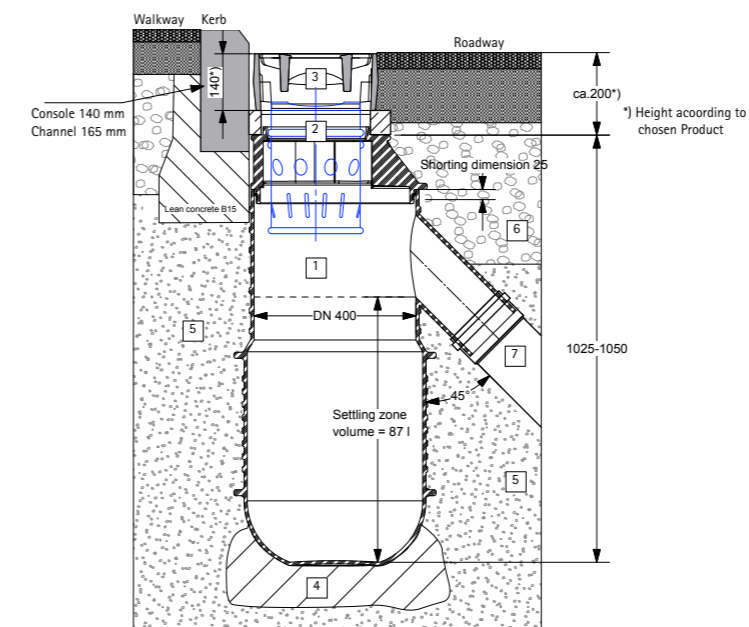
GRT 45.50.50.20.15/145 GRT 45.50.50.15/105

4. GRATING

On the upper side of the road gully will be placed the bearing ring according to DIN 4052, Typ 10a for grating 500 x 500 mm respectively. Typ 10b for grating 500 x 300 mm. The use of polymere load distribution rings (measurement according DIN 4052, Typ 10a respectively Typ 10b) is possible.

Further are offered polymere load distribution rings with cross slope for use in spiky gully/

pendulum gully from ROMOLD. The commercial inlet grates has to be placed on the load distribution ring.



KEY

- 1 ROMOLD PE road gully
- 2 Load distribution ring plastic/concrete page 73
- 3 Grating 500 x 500 or 300 x 500, Class D acc. DIN 19594
- 4 Lean concrete bearing, h = mind. 10 cm
- 5 Compressible backfill material
- 6 Frost protection layer road bed
- 7 Connecting pipe line DN/OD 200/160



ASSEMBLY- AND INSTALLATION NOTES

FOR ROMOLD PE ROAD GULLIES FOR TYP GST WITH STENCH TRAP GRATING



Zur Montageanleitung „to go“ QR-Code einscannen.



1. GENERAL INFORMATION

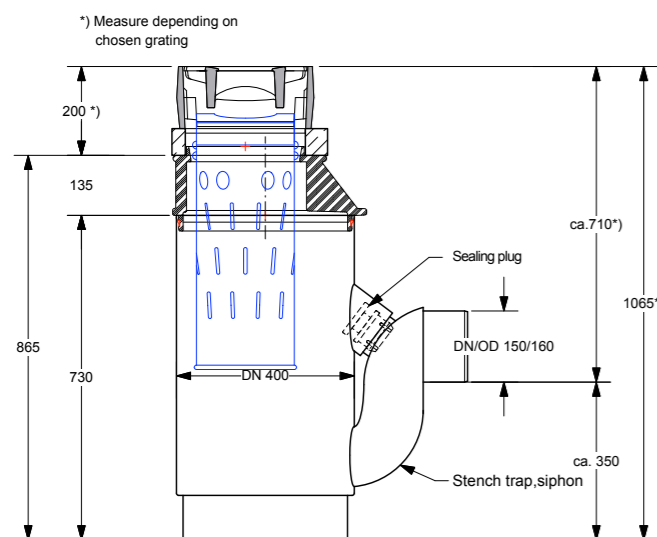
ROMOLD PE road gullies are provided ready to connect. All components must be checked for damage or contamination before installation and if necessary cleaned or replaced. Damaged components may not be installed! All supplied element seals have to be stored packed, protected from frost and direct sunlight.

Technical details:

- Material: made of 100 % virgin material Polyethylen (PE)
- Pipe line for socket-ended- bzw. welded possible (with waste-water-welding socket)
- Connection nominal diameter: DN/OD 160
- Suiting for commercial gratings 500 x 300 mm respectively 500 x 500 mm

2. EXCAVATION

The Excavation respectively the size of the head hole has to be made in a way that there is enough work room for the necessary working steps.



3. INSTALLATION

The upcoming ground compressing if needed.

The bearing of the road gully has to be executed from a at least 10 cm strong concrete granular subbase C12/15. Adjust road gully according to the outlet direction. Then bed the gully at least up to the bottom expiration of the siphon in concrete or support it laterally.

The laterally filling of the road gully is to be made with suiting filling material (non cohesive or low cohesive soils as per DIN 18196, e.g. gravel/sand mixture, natural grain material particle size 0 to 32 mm or crushed material particle size 0 to 16 mm). Build in the filling material in layers and compress it. Smooth walled plastic pipes can be directly connected, for other pipe materials or pipes with profile there are conversation adapters to be used. Core drills and lip seals are offered from ROMOLD as accessories.

For heat sealing with PE pipelines are to use waste water welding sockets If needed can the bottom part of the road gully (depends on the version) be shortened with a wood saw in the cylindrical part max. 5 cm. Eventual cut surfaces are to be deburred and than the item seal put on at the above end. Clean ROMOLD item seal, if neces-

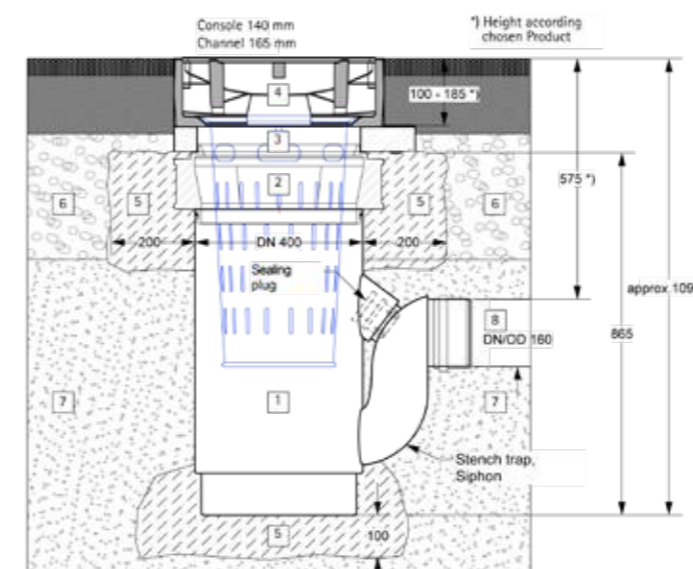
sary and provide it with enough lubricant.

For the next step put up the conversion adapter without tilting on the kerb and bring together to the stop. The ribs on the building part have to be completely bedded carefully in backfill material respectively frost protection material (remove big stones).

From the to edge conversion adapter is the PE road gully to sheathe with Height = approx. 30 cm lean concrete. The connection of drainage pipes or additional pipe connections takes place through bore of the road gully (in cylindrical parts) with a core drill and the insertion of a lip seal. Core drill and lip seal are available as accessories from ROMOLD.

4. GRATING

On the upper side of the road gully will be placed the bearing rind according to DIN 4052, Typ 10a for grating 500 x 500 mm respectively, Typ 10b for grating 500 x 300 mm. The use of polymere load distribution rings (meassurement according DIN 4052, Typ 10a respectively Typ 10b) is possible. Further are offered polymere load distribution rings with cross slope for use in spiky gully/ pendulum gully from ROMOLD. The commercial inlet grates has to be placed on the load distribution ring.



LEGENDE

- 1 ROMOLD PP road gully
- 2 Grating Adapter
- 3 Load distribution ring plastic/concrete page 73
- 4 Grating 500 x 500 or 300 x 500, Class. D acc. to DIN 19594
- 5 Lean concrete bearing
- 6 Frost protection layer road bed
- 7 Backfill material G1 or G2 acc. to ATV A 127
- 8 Connecting pipe line DN/OD 160

ASSEMBLY- AND INSTALLATION NOTES FOR TWO-PIECE ROAD GULLIES FOR LONGITUDINAL DRAINAGE



For assembly- and installation notes „to go“, scan QR-Code.

1. GENERAL INFORMATION

ROMOLD PE road gullies are provided ready to connect. All components must be checked for damage or contamination before installation and if necessary cleaned or replaced. Damaged components may not be installed! All supplied element seals have to be stored packed, protected from frost and direct sunlight.

Technical details:

- Material: made of 100 % virgin material Polyethylen (PE)
- Pipe line for socket-ended- bzw. welded possible (with wastewater-welding socket)
- Connection nominal diameter: DN/OD 160 to DN/OD 400
- Suiting for commercial gratings 500 x 300 mm respectively 500 x 500 mm

2. EXCAVATION

The Excavation respectively the size of the head hole has to be made in a way that there is enough work room for the necessary working steps.

3. INSTALLATION:

The upcoming ground compressing if needed.

The bearing of the road gully has to be executed from a at least 10 cm strong concrete granular subbase C12/15. Adjust road gul-

ly according to the outlet direction. Then bed the gully at least up to the apex area in concrete or support it laterally.

For connection of the bigger pipe diameter cut the smaller outlet spigot and deburr it. For connection of the pipes with seals drill the appropriate connection holes with a core drill, deburr it and put the seal in. The connection or drainage pipes or additional pipes can be done through drilling of the road gully (in cylindrical parts) like described above. Smooth walled plastic pipes can be directly connected, for other pipe materials or pipes with profile there are conversion adapters to be used. Core drills and lip seals are offered from ROMOLD as accessories.

The lateral filling of the road gully with suiting filling material, non cohesive or low cohesive soils as per DIN 18196, e.g. gravel/sand mixture, natural grain material particle size 0 to 32 mm or crushed material particle size 0 to 16 mm. Build in the filling material in layers and compress it.

If needed can the bottom part of the road gully (depends on the version) be shortened with a wood saw in the cylindrical part for max. 46 cm. Eventual cut surfaces are to be deburred and than the item seal put on at the above end. Clean ROMOLD item seal, if necessary and provide it with enough lubricant.

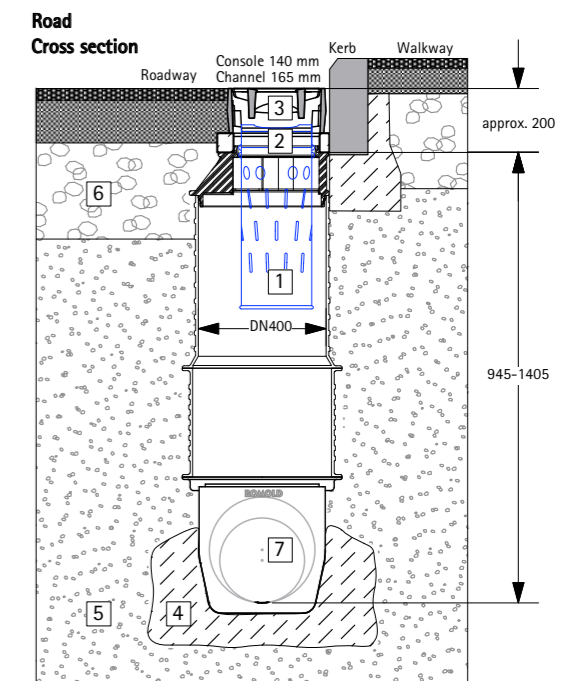
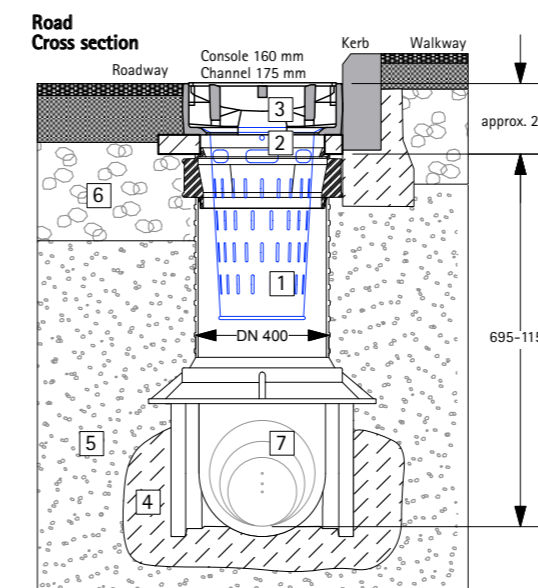
For the next step put up the conversion adapter without tilting on the kerb and bring together to the stop. The ribs on the building part have to be completely bedded carefully in backfill material respectively frost protection material (remove big stones).



4. GRATING:

On the upper side of the road gully will be placed the bearing ring according to DIN 4052, Typ 10a for grating 500 x 500 mm respectively. Typ 10b for grating 500 x 300 mm. The use of polymere load distribution rings (measurement according DIN 4052, Typ 10a respectively Typ 10b) is possible.

Further are offered polymere load distribution rings with cross slope for use in spiky gully/pendulum gully from ROMOLD. The commercial inlet grates has to be placed on the load distribution ring..



KEY

- 1 ROMOLD PP road gully
- 2 Load distribution ring plastic/concrete page 73
- 3 Grating 450 x 450, Kl. C/D acc. ÖNorm B 5110
- 4 Lean concrete bearing, h = mind. 10 cm
- 5 Compressible backfill material
- 6 Frost protection layer road bed
- 7 Connecting pipe line